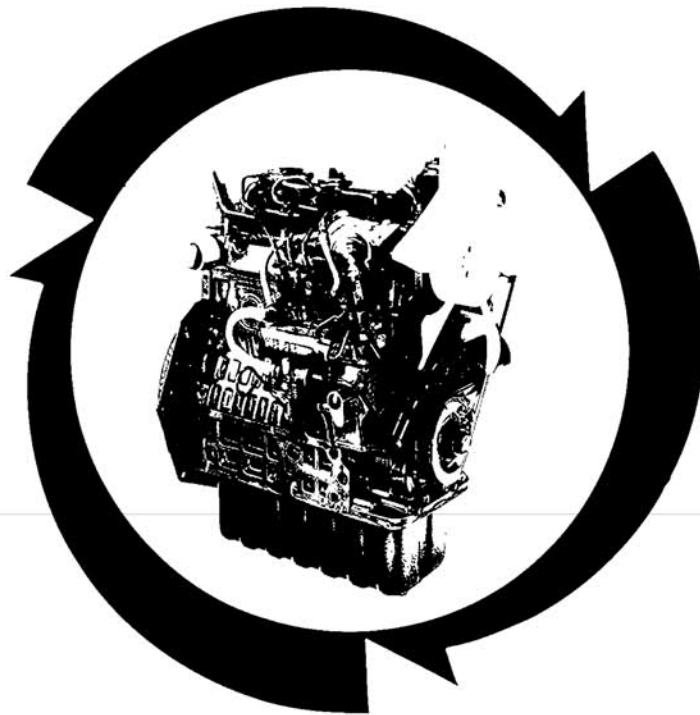


**ILLUSTRATED PARTS LIST  
LISTE DES PIECES  
STÜCK LISTE**

# **KUBOTA**

**MODEL**  
**MODELE** **D902-E3B-EU-X7-HAKO**  
**MODELL**

**DIESEL ENGINE  
MOTEUR DIESEL  
DIESEL MOTOREN**



**Kubota**

September 2009

## NOTICE

This Parts List is for the following purposes.

1. When ordering parts, check with this Parts List to confirm the part number and the name of parts.
2. When making repairs, refer to the illustrations in this Parts List.
3. This Parts List is subject to change without notice.

## NOTE

Utilisation de ce livre

1. A la commande d'une pièce, chercher la référence et le nom de la pièce.
2. Pour les réparations, employez les illustrations.
3. La liste des pièces peut-être modifié sans préavis.

## ACHTUNG

Die vorliegende Stückliste ist zur Verwendung der folgenden Fälle aufzubewahren:

1. Bei Bestellung der Teile anhand dieser Liste die Kennzahl und die Bezeichnung der Teile feststellen.
2. Bei Reparatur auf die Figur in der Stückliste Bezug nehmen.
3. Änderungen dieser Bestandteilliste vorbehalten.

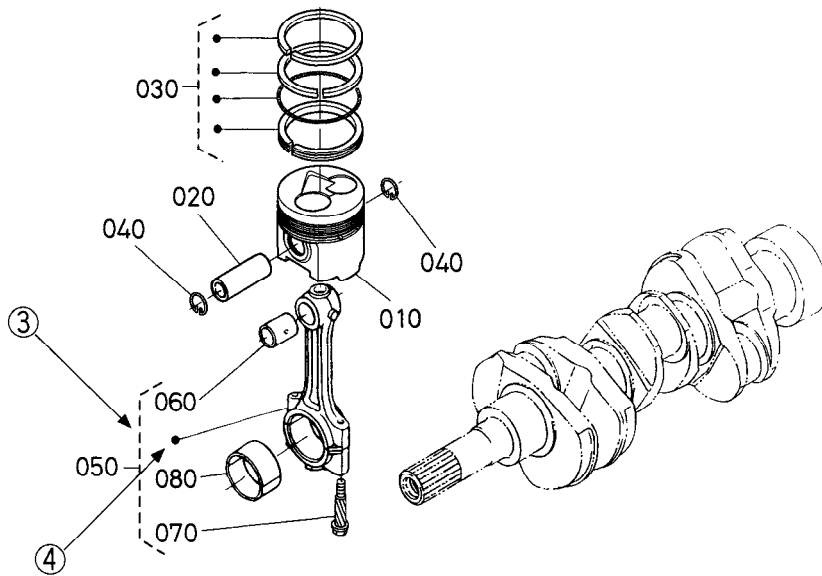
MODEL MODELE MODELL	CODE No. No. DE CODE CODE-Nr.
D902-E3B-EU-X7	1J446-00000

# INSTRUCTIONS INSTRUCTION ERKLÄRUNG

①  
↓  
**0102** PISTON AND CRANKSHAFT  
PISTON ET VILEBREQUIN  
KOLBEN UND KURBELWELLE

②  
↓  
{ B }

⑩ → S.No. ; A: ≤15000, B: 14000 to 15000



REF. No. POS.No. BILD-Nr.	PART No. REFERENCE BESTELL-Nr.	PART NAME	DESIGNATION	BEZEICHNUNG	QTY / S.No. QTE / No.S. STUECK / S.Nr.		I.C.	REMARKS REMARQUES BEMERKUNGEN
					A	B		
010	15800-0000-0	PISTON	PISTON	KOLBEN	1 <=15000	1 <=15000		{ Example-1 }
010	15800-0000-2	PISTON	PISTON	KOLBEN	1 >=15001	1 >=15001		{ Exemple-1 }
020	15800-1000-0	PIN,PISTON	AXE DE PISTON	KOLBENBOLZEN	1 <=15000	1 <=15000		{ Beispiel-1 }
020	15800-1000-2	PIN,PISTON	AXE DE PISTON	KOLBENBOLZEN	1 >=15001	1 >=15001		{ Example-2 }
030	15800-2000-0	ASSY PISTON RING	ENS.JEU DE SEGMENTS	KOLBENRINGE	1 <=15000	1 <=15000		{ Exemple-2 }
030	15830-2000-0	ASSY PISTON RING	ENS.JEU DE SEGMENTS	KOLBENRINGE	1 >=15001	1 >=15001		{ Beispiel-2 }
								{ Example-3 }
								{ Exemple-3 }
								{ Beispiel-3 }

A:XXXX, B:XXXX

- ① Fig. No. .... Represents No. corresponding to each group name.
- ② Specifications ..... The types and destinations of sister models are indicated. These indications are (for sister models) given to tell their relevant pages in this book.
- ③ Components ..... The components of an assembly are identified by a bracket of dotted lines.
- ④ Point ..... Indicates that the parts is not sold independently.  
The assembly (Ref.No.050) containing the part needs to be ordered.
- ⑤ REF. No. .... Reference numbers are assigned to parts in the illustration.The code number of a part in the illustration can be identified by referring to the same reference number in the parts list.
- ⑥ Model name ..... The name of the basic model is indicated in this column. Other applicable models are indicated on the "REMARKS" column ⑨.
- ⑦ S. No. .... Indicates a group of serial numbers to which a design change is applied. (serial No.)

Engine Serial No.

7 J 0001

7 K A001

Lower 4 digits in Numerals or Alphabetical letter (A to Z) and Numerals (start 0001 to max Z999).

5th digit ..... Alphabetical letter (Month of manufacture).

Month	1	2	3	4	5	6	7	8	9	10	11	12
	A,B	C,D	E,F	G,H	J,K	L,M	N,P	Q,R	S,T	U,V	W,X	Y,Z

6th digit ..... Numerals or Alphabetical letter (Year of manufacture).

Year	1998	1999	2000	01	02	03	04	05	06	07	08	09	10	11
	W	X	Y	1	2	3	4	5	6	7	8	9	A	B

- ⑧ I. C. .... Indicates the interchangeability of parts due to design change. (interchangeability)  
 Example-1 ..... ← indicates that a new part can replace an old part, but not vice versa.  
 15800-0000-0 is applicable to the first serial number to S. No. 15000.  
 15800-0000-2 is applicable to the first serial number and above.  
 Example-2 ..... ≠ indicates that the new and old parts are not interchangeable.  
 15800-1000-0 is applicable to the first serial number to S. No. 15000.  
 15800-1000-2 is applicable to S. No. 15001 and above.  
 Example-3 ..... ↔ indicates that the new and old parts are interchangeable. Both 15800-2000-0 and 15830-2000-0 are applicable to the first serial number and above.
- ⑨ REMARKS 1 ..... In this column, enter other applicable model names, dimensions and other special items.
- ⑩ REMARKS 2 ..... The following expressions are used in NOTE for each group.  
 Machines' serial numbers are indicated as follows.  
 <=15000 ..... Serial number below 15000.  
 >=15001 ..... Serial number above 15001.  
 14000 to 15000 ..... Serial number 14000 to 15000.  
 For some models, the above expressions may also be used REMARKS 1 ⑨.

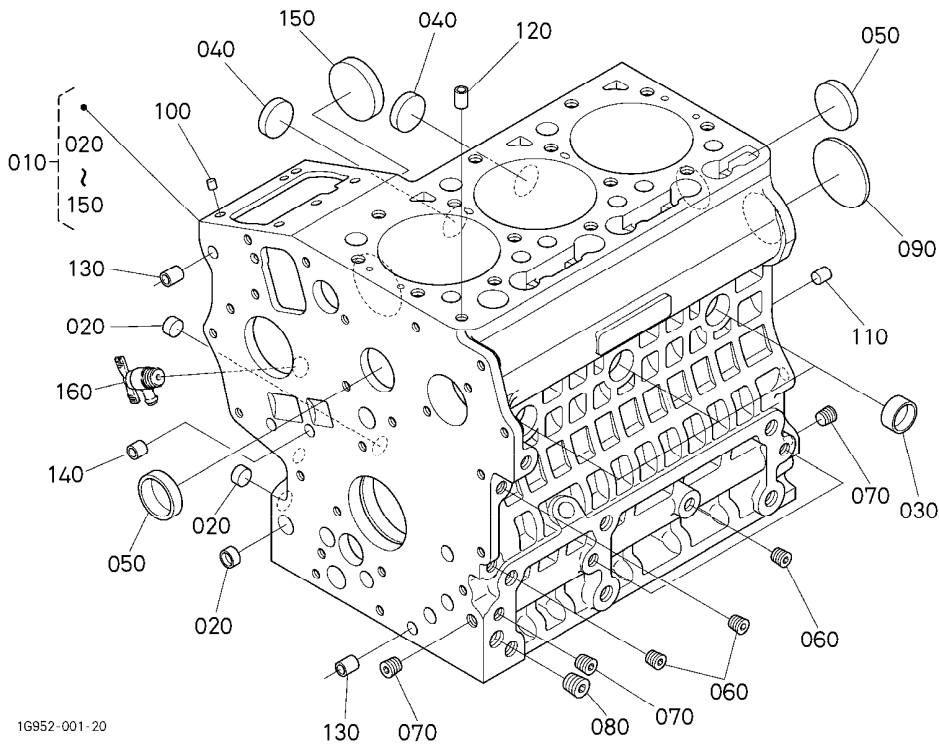
# CONTENTS

---

[D902-E3B-EU-X7]

0001	CRANKCASE .....	1
0002	OIL PAN .....	2
0003	CYLINDER HEAD .....	3
0004	GEAR CASE .....	4
0005	HEAD COVER .....	5
0006	OIL FILTER .....	6
0007	DIPSTICK AND GUIDE .....	7
0008	OIL PUMP .....	8
0100	MAIN BEARING CASE .....	9
0101	CAMSHAFT AND IDLE GEAR SHAFT .....	10
0102	PISTON AND CRANKSHAFT .....	11
0103	FLYWHEEL .....	13
0105	FUEL CAMSHAFT AND GOVERNOR SHAFT .....	14
0180	IDLE APPARATUS .....	15
0201	STOP SOLENOID .....	16
0202	INJECTION PUMP .....	17
0204	GOVERNOR .....	18
0205	SPEED CONTROL PLATE .....	19
0206	NOZZLE HOLDER AND GLOW PLUG .....	20
0207	NOZZLE HOLDER (COMPONENT PARTS) .....	21
0301	FUEL PUMP (MECHANICAL) .....	23
0402	ALTERNATOR AND PULLEY .....	24
0403	ALTERNATOR (COMPONENT PARTS) .....	25
0404	STARTER .....	26
0405	STARTER (COMPONENT PARTS) .....	27
0406	OIL SWITCH/THERMOMETER AND PLUG .....	28
0500	WATER FLANGE AND THERMOSTAT .....	29
0501	WATER PUMP .....	30
0503	WATER PIPE .....	31
0504	FAN .....	32
0600	VALVE AND ROCKER ARM .....	33
0601	INLET MANIFOLD .....	34
0602	EXHAUST MANIFOLD .....	35
0800	GLOW LAMP AND TIMER .....	36
0809	LABEL AND OPERATOR'S MANUAL .....	37
090001	GASKET KIT [OPTION] .....	38
090002	GASKET KIT [OPTION] .....	39
■	NUMERICAL INDEX .....	40

0001

**CRANKCASE  
BLOC MOTEUR  
KURBELGEHAEUSE**


1G952-001-20

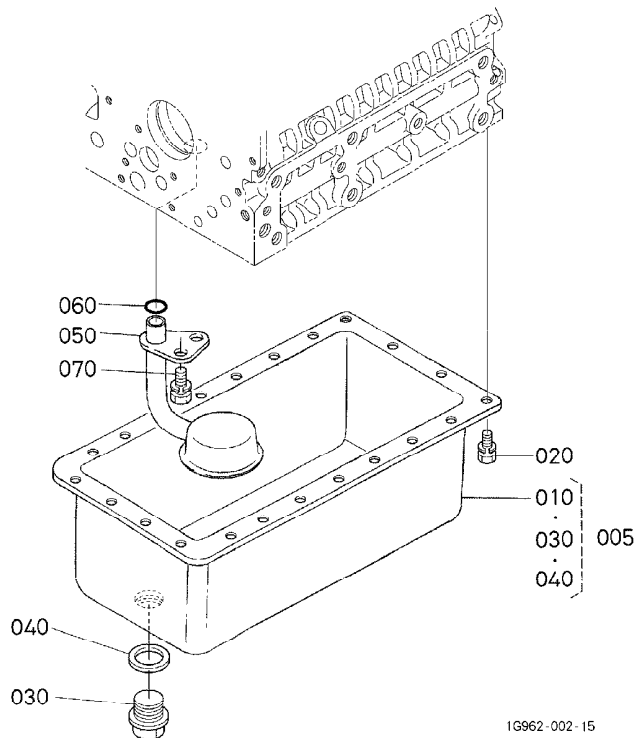
A: D902-E3B-EU-X7

REF. No. POS. No. BILD-Nr.	PART No. REFERENCE BESELL-Nr.	PART NAME	DESIGNATION	BEZEICHNUNG	QTY/S. No. Q' TE/No. S. STUECK/S. Nr.		I. C.	REMARKS REMARQUES BEMERKUNGEN
					A	B		
010	1G952-0101-9	COMP. CRANKCASE	BLOC MOTEUR COMPLET	KOMP. KURBELGEHAEUSE	1	-		
020	16851-9626-0	CAP. SEALING	PASTILLE	STOEPSSEL, ABDICHTUNG	3	-		
030	16851-9627-0	CAP. SEALING	PASTILLE	STOEPSSEL, ABDICHTUNG	3	-		
040	06311-85025	CAP. SEALING	PASTILLE	STOEPSSEL, ABDICHTUNG	2	-		
050	15451-9627-0	CAP. SEALING	PASTILLE	STOEPSSEL, ABDICHTUNG	2	-		
060	15261-9601-0	PLUG	BOUCHON	STOPFEN	5	-		
070	15521-9602-0	PLUG	BOUCHON	STOPFEN	3	-		
080	15521-9603-0	PLUG	BOUCHON	STOPFEN	1	-		
090	15261-9616-0	PLUG, EXPANSION	BOUCHON EXPANSIBLE	STOEPSSEL, AUSDEHNUNG	1	-		
100	05012-00508	PIN, STRAIGHT	GOUPILLE CYLINDRIQUE	ZYLINDERSTIFT	2	-		
110	05012-00814	PIN, STRAIGHT	GOUPILLE CYLINDRIQUE	ZYLINDERSTIFT	2	-		
120	15221-3365-0	PIN, PIPE	GICLEUR	ROHRSTIFT	1	-		
130	15231-3396-0	PIN, PIPE	GICLEUR	ROHRSTIFT	2	-		
140	17331-5919-0	PIN, PIPE	GICLEUR	ROHRSTIFT	2	-		
150	16851-1621-2	COVER, FUEL CAMSHAFT	COUV. ARBRE A GAMES	DECKELNOCKENWELLE	1	-		
160	15841-7302-0	ASSY COCK, DRAIN	ENS. ROBINET VIDANGE	GRP. ABLASSHAHN	1	-		

↔ Interchangeable; ≠ not interchangeable; ← new for old; → old for new

# 0002

# OIL PAN CARTER D' HUILE OELWANNE



1G962-002-15

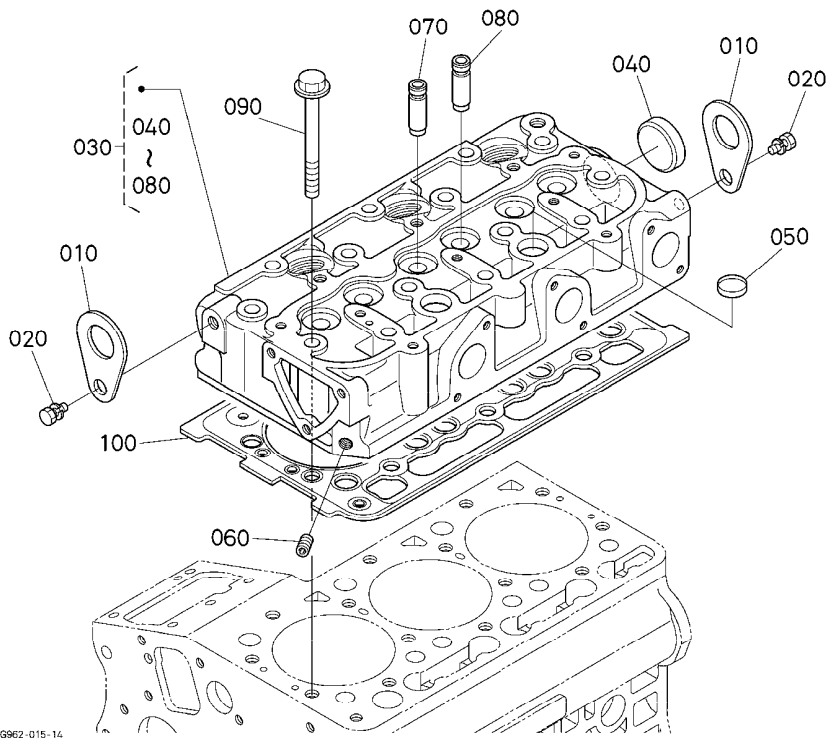
A: D902-E3B-EU-X7

REF. No. POS. No. BILD-Nr.	PART No. REFERENCE BESELL-Nr.	PART NAME	DESIGNATION	BEZEICHNUNG	Q'TY/S. No. Q' TE/No. S. STUECK/S. Nr.		I. C.	REMARKS REMARQUES BEMERKUNGEN
					A	B		
005	1G962-0160-0	KIT OIL PAN	ENS. CARTER D' HUILE	GRP. OELWANNE	1	-		
010	1G962-0150-2	COMP. OIL PAN	CARTER D' HUILE COMP.	KOMP. OELWANNE	1	-		
020	01023-50614	BOLT	VIS	BOLZEN	22	-		
030	15707-3375-0	PLUG, DRAIN	BOUCHON DE VIDANGE	ENTLEERUNGSSTOPFEN	1	-		
040	16265-9667-0	GASKET	JOINT	DICHTUNGSPLATTE	1	-		
050	16851-3211-0	FILTER, OIL	FILTRE D' HUILE	OELFILTER	1	-		
060	04814-00160	O RING	JOINT TORIQUE	O RING	1	-		
070	01123-60814	BOLT	VIS	BOLZEN	1	-		

↔ Interchangeable; ≠ not interchangeable; ← new for old; → old for new

0003

CYLINDER HEAD  
CULASSE  
ZYLINDERKOPF



A: D902-E3B-EU-X7

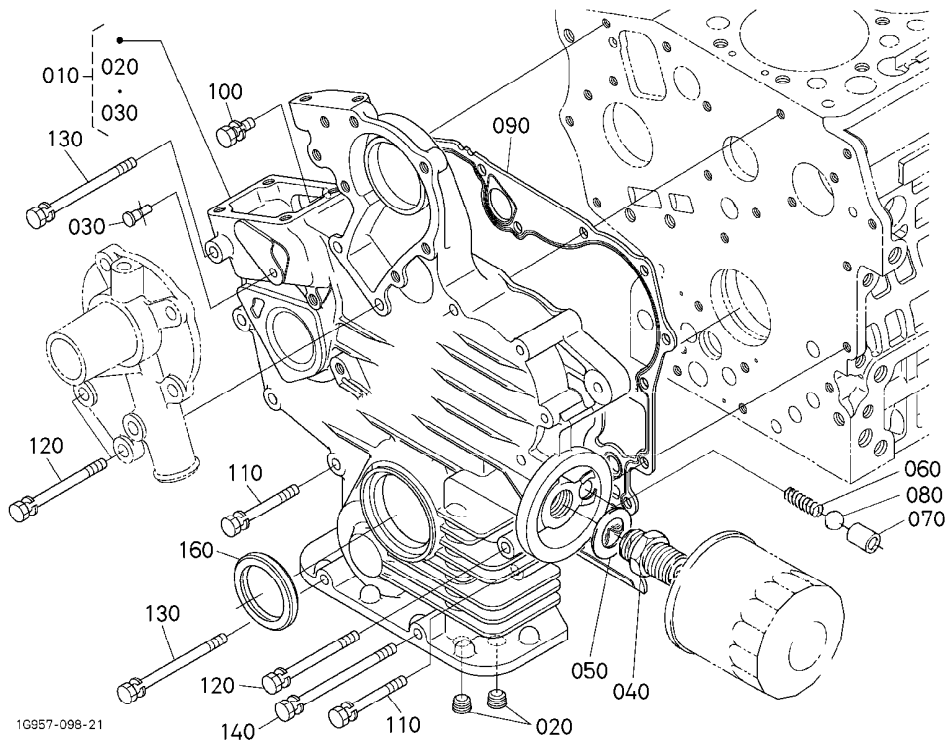
REF. No. POS. No. BILD-Nr.	PART No. REFERENCE BESELL-Nr.	PART NAME	DESIGNATION	BEZEICHNUNG	QTY/S. No. GTE/No. S. STUECK/S. Nr.		I. C.	REMARKS REMARQUES BEMERKUNGEN
					A	B		
010	15221-0175-0	HOOK, ENGINE	ANNEAU DE LEVAGE	MOTOR-ANKERHAKEN	2	-		
020	01123-60816	BOLT	VIS	BOLZEN	2	-		
030	1G962-0304-5	COMP. CYLINDER HEAD	CULASSE COMPLET	KOMP. ZYLINDERKOPF	1	-		
040	15321-9626-0	CAP, SEALING	PASTILLE	STOEPSSEL, ABDICHTUNG	1	-		
050	15261-0337-0	CAP, SEALING	PASTILLE	STOEPSSEL, ABDICHTUNG	2	-		
060	15261-9601-0	PLUG	BOUCHON	STOPFEN	1	-		
070	15841-1354-0	GUIDE, INLET VALVE	GUIDE SOUP. D' ADMISS.	EINLASSVENTILFUHRUNG	3	-		
080	15841-1356-0	GUIDE, EXHAUST VALVE	GUIDE SOUP. D' ECHAP.	AUSLASSVENTILFUHRUNG	3	-		
090	14601-0345-0	BOLT, CYLINDER HEAD	VIS DE CYLINDRE	ZYLINDERKOPFSCHRAUBE	14	-		
100	1G962-0331-3	GASKET, CYLINDER HEAD	JOINT	DICHTUNG, ZYLINDERKOPF	1	-		

↔ Interchangeable; ≠ not interchangeable; ← new for old; → old for new



0004

GEAR CASE  
CARTER DE DISTRIBUTION  
GETRIEBEGEHAUSE



1G957-098-21

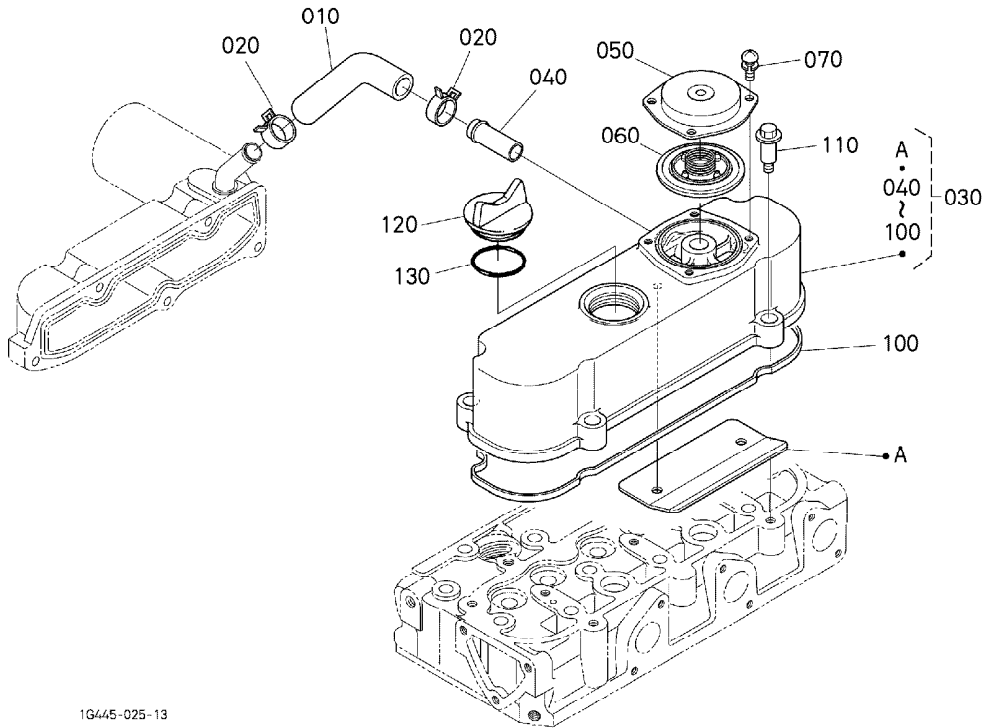
A: D902-E3B-EU-X7

REF. No. POS. No. BILD-Nr.	PART No. REFERENCE BESELL-Nr.	PART NAME	DESIGNATION	BEZEICHNUNG	Q'TY/S. No. Q'TE/No. S. STUECK/S. Nr.		I. C.	REMARKS REMARQUES BEMERKUNGEN
					A	B		
010	1G460-0402-4	COMP. CASE, GEAR	CARTER DISTR. COMP.	KMP. GETRIEBEGEHAUSE	1	-		
020	15521-9603-0	PLUG	BOUCHON	STOPFEN	2	-		
030	15841-5628-0	PIN, START SPRING	GOUPILLE DU RESSORT	STARTFEDERSTIFT	1	-		
040	15241-3229-0	JOINT, PIPE	RACCORD DE TUYAU	VERBINDUNGSTUECK	1	-		
050	15841-9401-0	WASHER, PLAIN	RONDELLE FREIN	SCHEIBE	1	-		
060	16851-3695-0	SPRING	RESSORT	FRUEHLING	1	-		
070	15841-3693-0	SEAT, VALVE	SIEGE DE SOUPE	SITZ, VENTIL	1	-		
080	07715-03211	BALL	BILLE	KUGEL	1	-		
090	1G962-0413-0	GASKET, GEAR CASE	JOINT	DICHTUNGGETRIEBEGEH.	1	-		
100	01023-50618	BOLT	VIS	BOLZEN	1	-		
110	01023-60650	BOLT	VIS	BOLZEN	8	-		
120	15841-9101-0	BOLT	VIS	BOLZEN	3	-		
130	01023-50680	BOLT	VIS	BOLZEN	2	-		
140	01023-50690	BOLT	VIS	BOLZEN	1	-		
150	---	BLANK	BLANC	LEERE SPALTE	-	-		
160	15877-0414-0	SEAL, OIL	BAGUE JOINT	OELDICHTUNGSRING	1	-		

↔ Interchangeable; ≠ not interchangeable; ← new for old; → old for new

0005

HEAD COVER  
COUVRE-CULASSE  
ZYLINDERKOPF-DECKEL



1G445-025-13

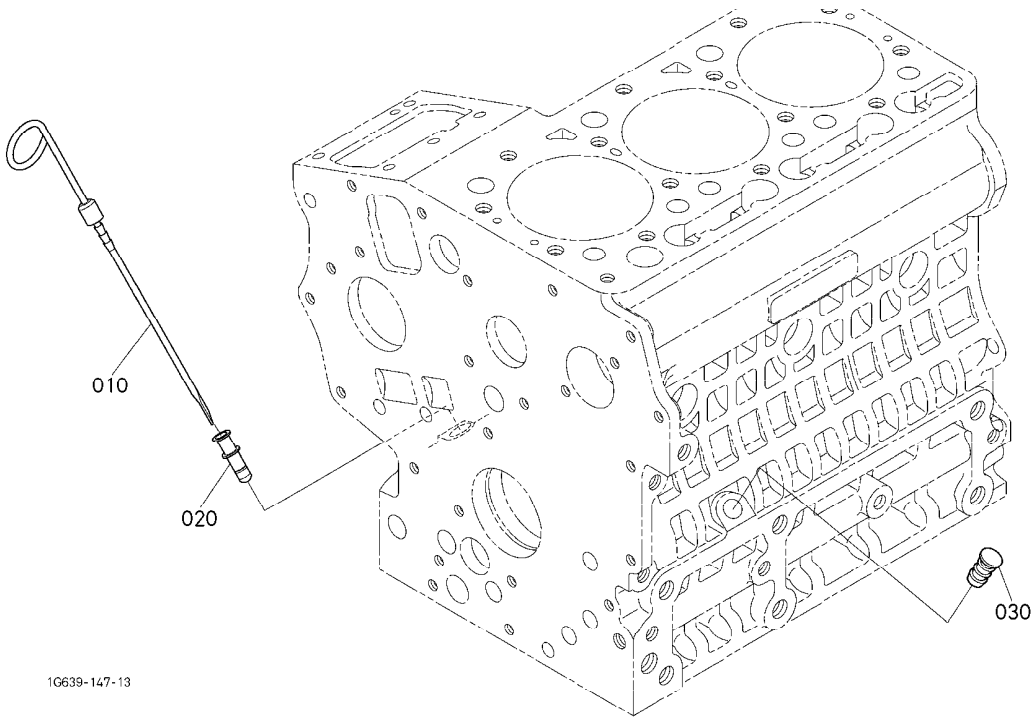
A: D902-E3B-EU-X7

REF. No. POS. No. BILD-Nr.	PART No. REFERENCE BESELL-Nr.	PART NAME	DESIGNATION	BEZEICHNUNG	Q'TY/S. No. Q'TE/No. S. STUECK/S. Nr.		I. C.	REMARKS REMARQUES BEMERKUNGEN
					A	B		
010	1G960-0551-2	TUBE, BREATHER	TUYAU DE REINFLARD	ENTLUFTUNGSROHR	1	-		
020	09318-88125	CLAMP, HOSE	COLLIER DE DURITE	SCHLAUCHBINDER	2	-		
030	1G960-1450-5	ASSY COVER, CYL. HEAD	ENS. COUVERCLE	ZYLINDERKOPFHAUBE	1	-		
040	16241-7337-0	PIPE, WATER RETURN	TUYAU RETOUR D'EAU	WASSERROHR	1	-		
050	1G801-0512-0	COVER, BREATHER	COUVERCLE ASPIRATEUR	ENTLUEFTERDECKEL	1	-		
060	1G911-0520-3	COMP. VALVE, BREATHER	ENS. ROBINET DE REIN.	GRP. HAHNENTLUFTUNGS	1	-		
070	03024-50510	SCREW, WITH WASHER	VIS	SCHRAUBE	4	-		
080	---	BLANK	BLANC	LEERE SPALTE	-	-		
090	---	BLANK	BLANC	LEERE SPALTE	-	-		
100	1G962-1452-2	GASKET, HEAD COVER	JOINT COUVRE-CULASSE	DICHTUNG, KOPFDECKEL	1	-		
110	1G911-9102-2	BOLT	VIS	BOLZEN	4	-		
120	E9151-3314-0	PLUG, OIL FILLER	BOUCHON, REMPLIS. H/L	OELEINFUELLSSTOPFEN	1	-		
130	04814-50300	O RING	JOINT TORIQUE	O RING	1	-		



0007

DIPSTICK AND GUIDE  
JAUGE D' HUILE ET GUIDE  
OELMESSSTAB UND FUEHRUNG



1G639-147-13

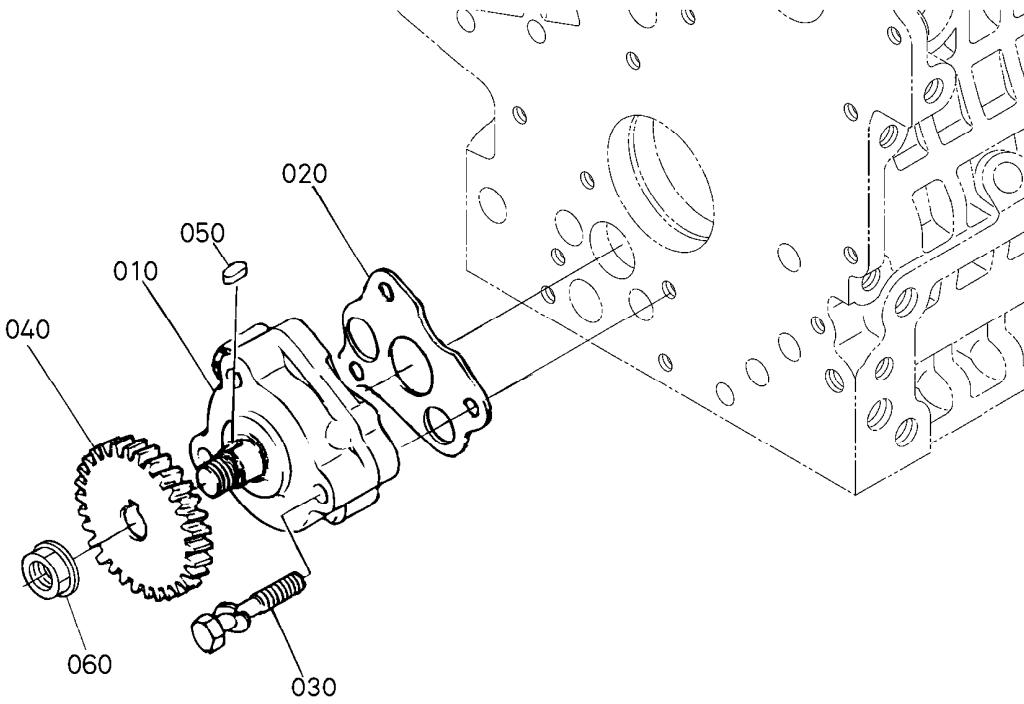
A: D902-E3B-EU-X7

REF. No. POS. No. BILD-Nr.	PART No. REFERENCE BESELL-Nr.	PART NAME	DESIGNATION	BEZEICHNUNG	Q'TY/S. No. Q' TE/No. S. STUECK/S. Nr.		I. C.	REMARKS REMARQUES BEMERKUNGEN
					A	B		
010	16829-3641-0	GAUGE, OIL	JAUGE D' HUILE	OELMESSSTAB	1	-		
020	17456-3642-0	GUIDE, OIL GAUGE	GUIDE	FUEHRUNG, OEL-MEBSSTAB	1	-		
030	1G513-3655-0	PLUG, OIL GAUGE	BOUCHON DE JAUGE	STOPFENOELMESSSTAB	1	-		

↔ Interchangeable; ≠ not interchangeable; ← new for old; → old for new

0008

OIL PUMP  
POMPE D' HUILE  
OEL PUMPE



1G825-009-10

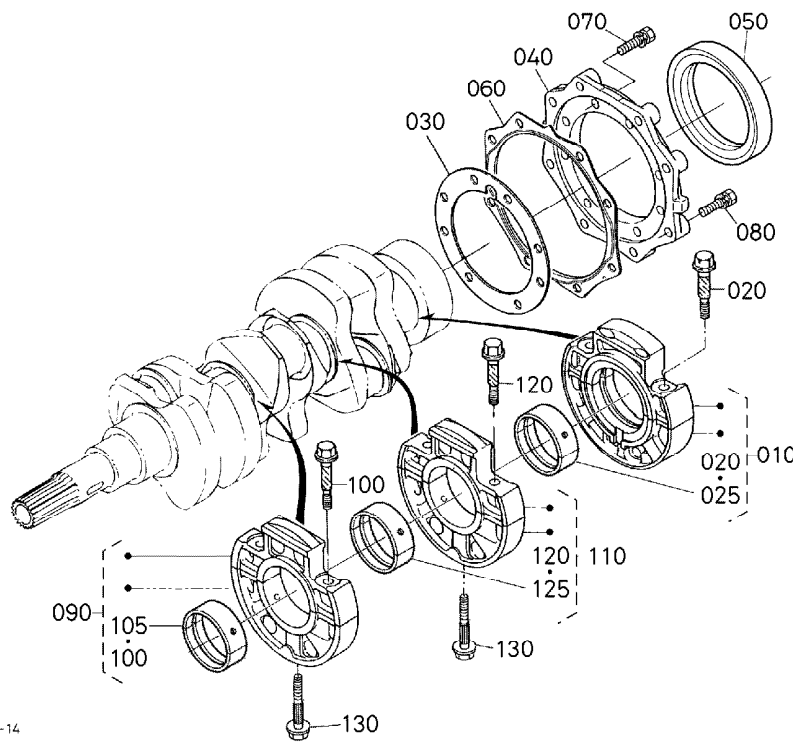
A: D902-E3B-EU-X7

REF. No. POS. No. BILD-Nr.	PART No. REFERENCE BESELL-Nr.	PART NAME	DESIGNATION	BEZEICHNUNG	QTY/S. No.		I. C.	REMARKS REMARQUES BEMERKUNGEN
					A	B		
010	16851-3501-2	ASSY PUMP, OIL	ENS. POMPE A HUILE	GRP. OELPUMPE	1	-		
020	16851-3515-2	GASKET, OIL PUMP NA	JOINT POMPE A HUILE	DICHTUNG, OELPUMPE	1	-		
030	15841-9105-0	BOLT	VIS	BOLZEN	3	-		
040	15841-3566-0	GEAR, OIL PUMP DRIVE	PIGNON ENTRAIN. POMPE	GETRIEBE	1	-		
050	05712-00408	KEY, FEATHER	CLAVETTE	KEIL	1	-		
060	02783-50100	NUT, FLANGE	ECROU A EMBASE	FLANSCHEN-MUTTER	1	-		

↔ Interchangeable; ≠ not interchangeable; ← new for old; → old for new

# 0100

## MAIN BEARING CASE PALIERS DE VILEBREQUIN HAUPTLAGERGEHAEUSE



1G962-005-14

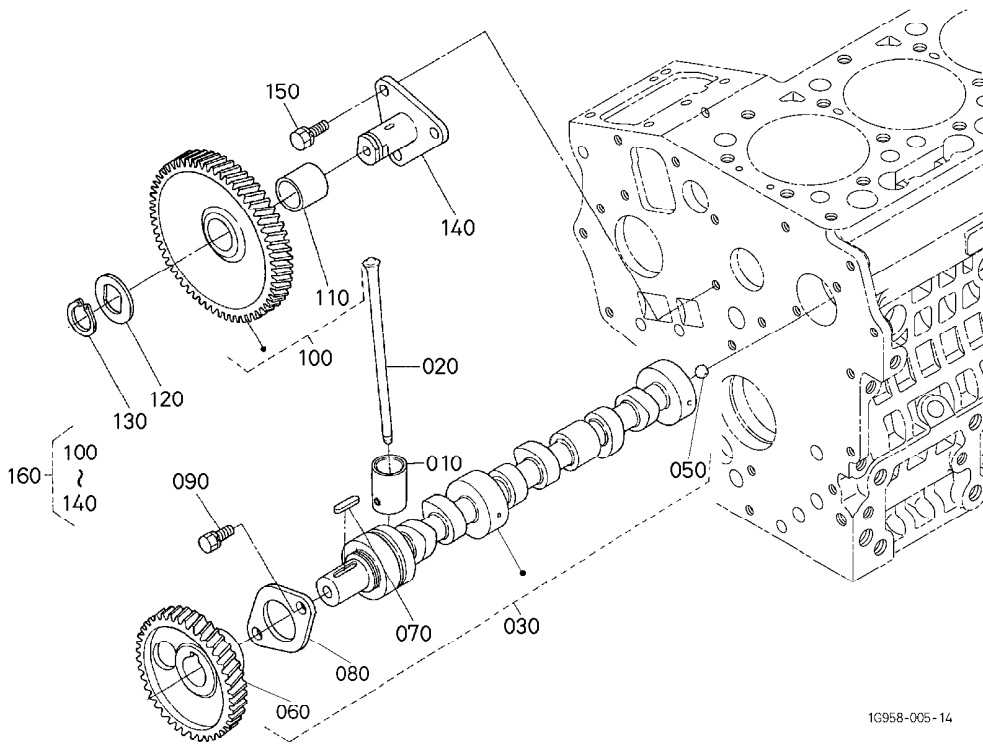
A: D902-E3B-EU-X7

REF. No. POS. No. BILD-Nr.	PART No. REFERENCE BESELL-Nr.	PART NAME	DESIGNATION	BEZEICHNUNG	Q'TY/S.No. Q'TE/No.S. STUECK/S.Nr.		I. C.	REMARKS REMARQUES BEMERKUNGEN
					A	B		
010	1G460-0709-0	ASSY BRG. CASE, WHEEL	ENS. PALIER VILEBREQ.	GRP. LAGERGEHAEUSE	1	-		
020	1G460-0454-0	BOLT, BEARING CASE	VIS	BOLZEN, LAGERKASTEN	2	-		
025	1G460-2382-0	ASSY METAL, CRANKSHA.	ENS. COUSSINET DE VI.	GRP. METALLTEIL	1	-		STD SET
030	15852-0436-0	GASKET, BEARING CASE	JOINT CART. DE RLMT	DICHTUNG, LAGER	1	-		
040	15841-0481-5	COVER, BEARING CASE	PORTE JOINT	DECKEL, LAGERKASTEN	1	-		
050	1G460-0446-0	SEAL, OIL	BAGUE JOINT	OELDICHTUNGSRING	1	-		
060	15841-0482-3	GASKET, CASE COVER	JOINT DE CARTER FOU	DICHTUNG GEHAEUSEDEC	1	-		
070	01023-50620	BOLT	VIS	BOLZEN	8	-		
080	01023-50622	BOLT	VIS	BOLZEN	8	-		
090	1G460-0704-0	ASSY BRG. CASE, MAIN	ENS. PALIER VILEBREQ.	GRP. LAGERGEHAEUSE	1	-		
100	1G460-0454-0	BOLT, BEARING CASE	VIS	BOLZEN, LAGERKASTEN	2	-		
105	1G460-2383-0	ASSY METAL, CRANKSHA.	ENS. COUSSINET DE VI.	GRP. METALLTEIL	1	-		STD SET
110	1G962-0705-0	ASSY BRG. CASE, MAIN	ENS. PALIER VILEBREQ.	GRP. LAGERGEHAEUSE	1	-		
120	1G460-0454-0	BOLT, BEARING CASE	VIS	BOLZEN, LAGERKASTEN	2	-		
125	1G460-2383-0	ASSY METAL, CRANKSHA.	ENS. COUSSINET DE VI.	GRP. METALLTEIL	1	-		STD SET
130	15841-0456-2	BOLT, BEARING CASE	VIS	BOLZEN, LAGERKASTEN	2	-		

↔ Interchangeable; ≠ not interchangeable; ← new for old; → old for new

# 0101

## CAMSHAFT AND IDLE GEAR SHAFT ARBRE A CAMES ET ARBRE DE PIGNON DE RALENTI NOCKENWELLE UND FREILAUFGETRIEBEWELLE



1G958-005-14

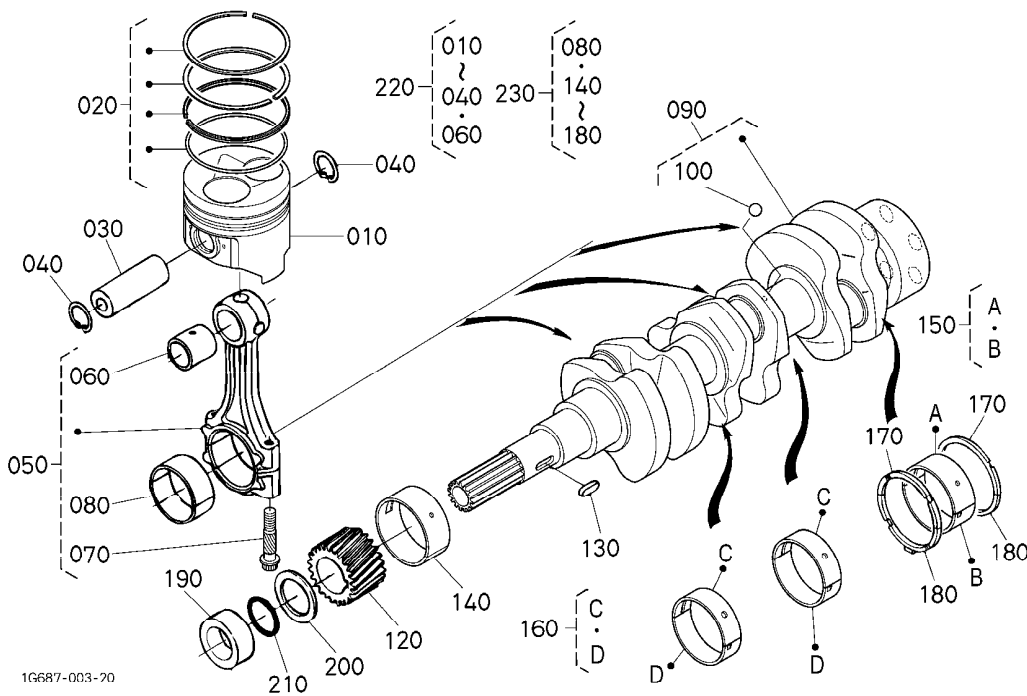
A: D902-E3B-EU-X7

REF. No. POS. No. BILD-Nr.	PART No. REFERENCE BESELL-Nr.	PART NAME	DESIGNATION	BEZEICHNUNG	QTY/S. No. QTE/No. S. STUECK/S. Nr.		I. C.	REMARKS REMARQUES BEMERKUNGEN
					A	B		
010	16851-1555-2	TAPPET	POUSSOIR	STOSSEL	6	-		
020	16851-1511-0	PUSH ROD	TIGE DE POUSSOIR	STOSSELSTANGE	6	-		
030	1G962-1601-5	ASSY CAMSHAFT	ENS. ARBRE A CAMES	GRP. NOCKENWELLE	1	-		
040	---	BLANK	BLANC	LEERE SPALTE	-	-		
050	07715-00401	BALL	BILLE	KUGEL	1	-		
060	16864-1651-0	GEAR, CAM	PIGNON	ZAHNRAD	1	-		
070	05712-00518	KEY, FEATHER	CLAVETTE	KEIL	1	-		
080	15841-1627-0	STOPPER, CAMSHAFT	BOUCHON ARBRE A CAME	NOCKENWELLESPERRPLA.	1	-		
090	01023-50612	BOLT	VIS	BOLZEN	2	-		
100	15875-2401-3	COMP. GEAR, IDLE	PIGNON FOU COMP.	KOMP. LEERLAUFGETRIEB	1	-		
110	15875-2428-2	BUSH	BAGUE	BUCHSE	1	-		
120	15875-2437-0	COLLAR, IDLE GEAR	COLLIER DE PIGNONF.	HUELSELEERLAUFGETRI.	1	-		
130	15875-2432-0	RING, SNAP	BAGUE ELASTIQUE	VERSCHLUSSRING	1	-		
140	15875-2425-0	SHAFT, IDLE GEAR	ARBRE DE PIGNON FOU	WELLE, FREILAUFGETR.	1	-		
150	01023-50614	BOLT	VIS	BOLZEN	3	-		
160	15875-9934-0	ASSY GEAR, IDLE SER/V	PIGNON, INTERMEDIAIRE	GRP. LEERGANG	1	-		

↔ Interchangeable; ≠ not interchangeable; ← new for old; → old for new

# 0102

## PISTON AND CRANKSHAFT PISTON ET VILEBREQUIN KOLBEN UND KURBELWELLE



1G687-003-70

A: D902-E3B-EU-X7

REF. No. POS. No. BILD-Nr.	PART No. REFERENCE BESELL-Nr.	PART NAME	DESIGNATION	BEZEICHNUNG	QTY/S. No. G° TE/No. S. STUECK/S. Nr.		I. C.	REMARKS REMARQUES BEMERKUNGEN
					A	B		
010	1G826-2111-2	PISTON	PISTON	KOLBEN	3	-		STD
010	1G826-2190-2	PISTON	PISTON	KOLBEN	3	-		+0.25mm
020	1G460-2105-0	ASSY PISTON RING	ENS. SEGMENT	GRP. KOLBENRING	3	-		STD
020	1G460-2109-0	ASSY PISTON RING	ENS. SEGMENT	GRP. KOLBENRING	3	-		+0.25mm
030	16871-2131-0	PIN, PISTON	AXE DE PISTON	KOLBENBOLZEN	3	-		
040	15261-2133-0	CIR CLIP, PISTON PIN	CIRCLIP	SEEGERING	6	-		
050	16851-2201-5	ASSY ROD, CONNECTING	ENS. BIELLE	TRIEBSTANGE KOMP	3	-		
060	16851-2198-2	BUSH, PISTON PIN	BAGUE DE BIELLE	BUCHSE, KOLBENSTIFT	3	-		
070	16851-2214-0	BOLT, CONNECTING ROD	VIS DE BIELLE	BOLZEN	6	-		
080	16851-2232-0	METAL, CRANKPIN M	COUSSINET DE BIELLE	METALLTEIL	3	-		STD SET
080	16851-2233-0	METAL, CRANKPIN L	COUSSINET DE BIELLE	METALLTEIL	3	-		STD SET
080	15861-2297-0	METAL, CRANKPIN	COUSSINET DE BIELLE	METALLTEIL	3	-		-0.20mm SET
080	15861-2298-0	METAL, CRANKPIN	COUSSINET DE BIELLE	METALLTEIL	3	-		-0.40mm SET
090	1G962-2301-2	COMP. CRANKSHAFT	VILEBREQUIN COMPLET	KOMP. KURBELWELLE	1	-		
100	07715-03207	BALL	BILLE	KUGEL	3	-		
110	---	BLANK	BLANC	LEERE SPALTE	-	-		
120	15841-2411-0	GEAR, CRANK	PIGNON	ZAHNRAD	1	-		
130	05712-00515	KEY, FEATHER	CLAVETTE	KEIL	1	-		
140	1G460-2347-0	METAL, CRANKSHAFT	COUSSINET DE VILEBR.	METALLTEIL	1	-		STD
140	1G460-2391-0	METAL, CRANKSHAFT	COUSSINET DE VILEBR.	METALLTEIL	1	-		-0.20mm
140	1G460-2392-0	METAL, CRANKSHAFT	COUSSINET DE VILEBR.	METALLTEIL	1	-		-0.40mm
150	1G460-2382-0	ASSY METAL, CRANKSHA.	ENS. COUSSINET DE VI.	GRP. METALLTEIL	1	-		STD SET
150	1G460-2393-0	ASSY METAL, CRANKSHA.	ENS. COUSSINET DE VI.	GRP. METALLTEIL	1	-		-0.20mm SET
150	1G460-2395-0	ASSY METAL, CRANKSHA.	ENS. COUSSINET DE VI.	GRP. METALLTEIL	1	-		-0.40mm SET
160	1G460-2383-0	ASSY METAL, CRANKSHA.	ENS. COUSSINET DE VI.	GRP. METALLTEIL	2	-		STD SET
160	1G460-2394-0	ASSY METAL, CRANKSHA.	ENS. COUSSINET DE VI.	GRP. METALLTEIL	2	-		-0.20mm SET
160	1G460-2396-0	ASSY METAL, CRANKSHA.	ENS. COUSSINET DE VI.	GRP. METALLTEIL	2	-		-0.40mm SET
170	15261-2353-0	METAL, SIDE	COUSSINET DE LATERAL	METALLSEITENRING	2	-		STD
170	15261-2395-0	METAL, SIDE	COUSSINET DE LATERAL	METALLSEITENRING	2	-		+0.20mm
170	15261-2396-0	METAL, SIDE	COUSSINET DE LATERAL	METALLSEITENRING	2	-		+0.40mm

↔ Interchangeable; ≠ not interchangeable; ← new for old; → old for new







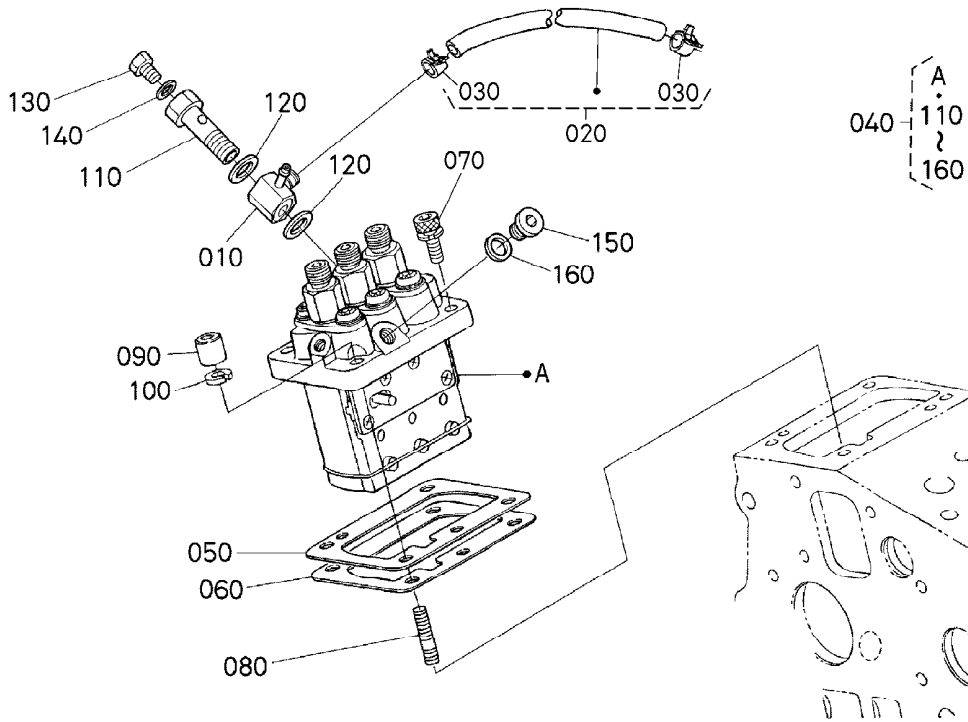






0202

INJECTION PUMP  
POMPE D' INJECTION  
EINSPRITZPUMPE



1J448-011-11

A: D902-E3B-EU-X7

REF. No. POS. No. BILD-Nr.	PART No. REFERENCE BESELL-Nr.	PART NAME	DESIGNATION	BEZEICHNUNG	QTY/S. No. Q' TE/No. S. STUECK/S. Nr.		I. C.	REMARKS REMARQUES BEMERKUNGEN
					A	B		
010	16809-9568-0	JOINT	RACCORD	SCHALTUNG	1	-		
020	15261-4201-0	ASSY PIPE, FUEL	ENS. TUYAU CARBURANT	GRP. KRAFTSTOFFROHR	1	-		
030	14911-4275-0	CLIP, PIPE	ATTACHE	ROHRKLEMME	2	-		
040	16006-5101-0	ASSY PUMP, INJECTION	ENS. POMPE INJECTION	GRP. EINSPRITZPUMPE	1	-		
050	1G700-5220-0	SHIM, INJECTION PUMP	CALE, POMPE INJECTION	ABSTANDSSCHEIBE	1	-		0. 175mm
050	16006-5209-2	SHIM, INJECTION PUMP	CALE, POMPE INJECTION	ABSTANDSSCHEIBE	1	-		0. 200mm
050	16006-5211-2	SHIM, INJECTION PUMP	CALE, POMPE INJECTION	ABSTANDSSCHEIBE	1	-		0. 250mm
060	16006-5212-2	SHIM, INJECTION PUMP	CALE, POMPE INJECTION	ABSTANDSSCHEIBE	1	-		0. 300mm
060	1G700-5216-0	SHIM, INJECTION PUMP	CALE, POMPE INJECTION	ABSTANDSSCHEIBE	1	-		0. 350mm
070	16871-9106-0	BOLT, HEX-SOC-HD	VIS	BOLZEN	2	-		
080	15841-9150-0	STUD	GOUJON	STEBBOLZEN	2	-		
090	15841-9232-0	NUT	ECROU	MUTTER	2	-		
100	04512-60060	WASHER, SPRING	RONDELLE GROWER	FEDERRING	2	-		
110	15841-5132-0	SCREW, HOLLOW	VIS	SCHRAUBE	1	-		
120	15841-9665-0	GASKET	JOINT	DICHTUNGSPLATTE	2	-		
130	15841-5135-0	SCREW	VIS	SCHRAUBE	1	-		
140	15841-9666-0	GASKET	JOINT	DICHTUNGSPLATTE	1	-		
150	16030-9601-0	PLUG	BOUCHON	STOPFEN	1	-		
160	15861-9665-0	GASKET	JOINT	DICHTUNGSPLATTE	1	-		

↔ Interchangeable; ≠ not interchangeable; ← new for old; → old for new

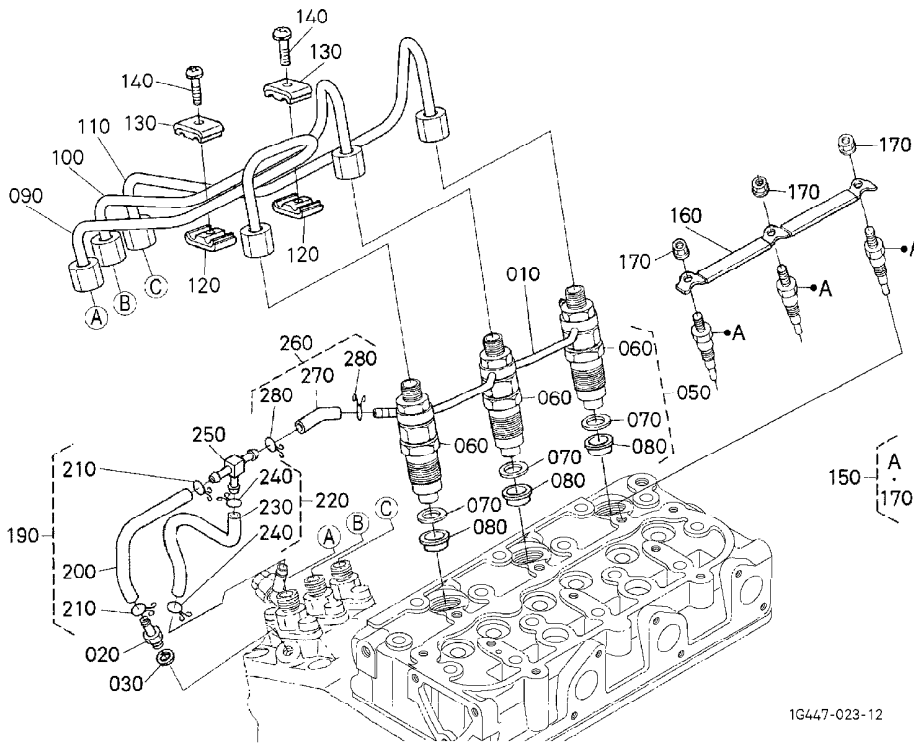






0206

NOZZLE HOLDER AND GLOW PLUG  
 PORTE-INJECTEUR ET BOUGIE DE PRECHAUFFAGE  
 DUESENHALTER UND GLEUHKERZE



1G447-023-12

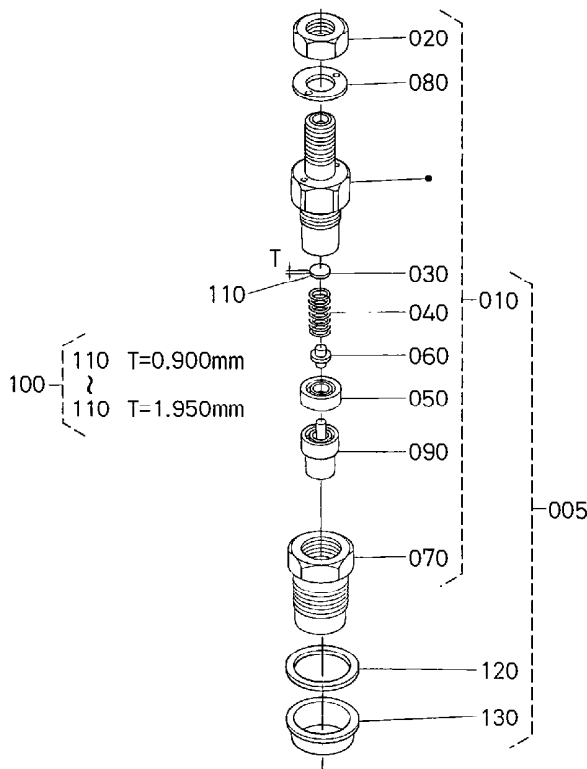
A: D902-E3B-EU-X7

REF. No. POS. No. BILD-Nr.	PART No. REFERENCE BESELL-Nr.	PART NAME	DESIGNATION	BEZEICHNUNG	Q' TY/S. No. Q' TE/No. S. STUECK/S. Nr.		I. C.	REMARKS REMARQUES BEMERKUNGEN
					A	B		
010	1G962-4250-0	ASSY PIPE, OVER FLOW	ENS. TUYAU TROP-PLEIN	GRP. UEBERLAUFROHR	1	-		
020	15841-5136-0	SCREW, AIR BLEEDER	VIS DE AIR-AVICLTEUR	SCHRAUBE	1	-		
030	15601-9665-0	GASKET	JOINT	DICHTUNGSPLATTE	1	-		
040	---	BLANK	BLANC	LEERE SPALTE	-	-		
050	16001-5390-0	KIT HOLDER, NOZZLE	ENS. PORTE-INJECTEUR	GRP. DUESENHALTER	3	-		
060	16001-5300-0	ASSY HOLDER, NOZZLE	ENS. PORTE-INJECTEUR	GRP. DUESENHALTER	3	-		
070	15841-5362-2	GASKET	JOINT	DICHTUNGSPLATTE	3	-		
080	19077-5365-0	SEAL, HEAT	JOINT DE CHALEUR	DICHTUNG	3	-		
090	1G460-5371-2	PIPE, INJECTION	TUYAU D' INJECTEUR	EINSPRITZROHR	1	-		
100	1G460-5372-3	PIPE, INJECTION	TUYAU D' INJECTEUR	EINSPRITZROHR	1	-		
110	1G962-5373-2	PIPE, INJECTION	TUYAU D' INJECTEUR	EINSPRITZROHR	1	-		
120	15841-5385-0	CLAMP, PIPE	COLLIER DE TUYAU	ROHRKLEMME	2	-		
130	15841-5386-0	CLAMP, PIPE	COLLIER DE TUYAU	ROHRKLEMME	2	-		
140	03024-50520	SCREW, WITH WASHER	VIS	SCHRAUBE	2	-		
150	16851-6551-2	GLOW PLUG	BOUGIE, PRE-CHAUFFAGE	GLEUHKSTOEPSSEL	3	-		
160	1G962-6556-0	CORD, GLOW PLUG	FILDEBOUG. PRECHAUFF.	GLEUHKERZEKORD	1	-		
170	02761-50040	NUT, FLANGE	ECROU A EMBASE	FLANSCHEN-MUTTER	3	-		
180	---	BLANK	BLANC	LEERE SPALTE	-	-		
190	16809-4203-0	ASSY TUBE, FUEL	ENS. TUYAU CARBURANT	GRP. KRAFTSTOFFROHR	1	-		
200	09661-40085	TUBE, FUEL	TUYAU	KRAFTSTOFFROHR	1	-		
210	14971-4275-0	CLIP, PIPE	ATTACHE	ROHRKLEMME	2	-		
220	16809-4250-0	ASSY TUBE, FUEL	ENS. TUYAU CARBURANT	GRP. KRAFTSTOFFROHR	1	-		
230	09661-40130	TUBE, FUEL	TUYAU	KRAFTSTOFFROHR	1	-		
240	14971-4275-0	CLIP, PIPE	ATTACHE	ROHRKLEMME	2	-		
250	1G065-4236-0	JOINT, T-PIPE	RACCORD DE TUYAU	VERBINDUNGSSTUECK	1	-		
260	16809-4202-0	ASSY TUBE, FUEL	ENS. TUYAU CARBURANT	GRP. KRAFTSTOFFROHR	1	-		
270	09661-40040	TUBE, FUEL	TUYAU	KRAFTSTOFFROHR	1	-		
280	14971-4275-0	CLIP, PIPE	ATTACHE	ROHRKLEMME	2	-		

↔ Interchangeable; ≠ not interchangeable; ← new for old; → old for new

0207

NOZZLE HOLDER (COMPONENT PARTS)  
 PORTE-INJECTEUR (PARTIES COMPOSANTES)  
 DUESENHALTER (EINZEL-TEIL)



1G541-021-11

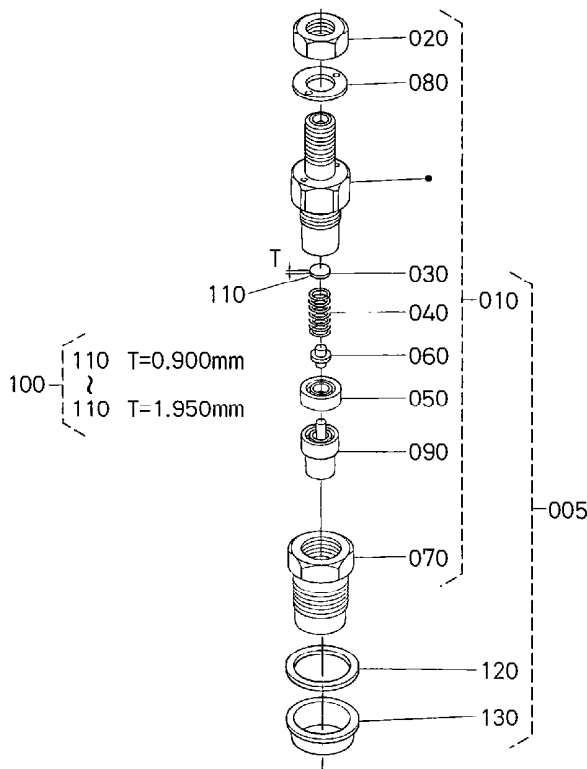
A: D902-E3B-EU-X7

REF. No. POS. No. BILD-Nr.	PART No. REFERENCE BESELL-Nr.	PART NAME	DESIGNATION	BEZEICHNUNG	Q'TY/S. No. Q'TE/No. S. STUECK/S. Nr.		I. C.	REMARKS REMARQUES BEMERKUNGEN
					A	B		
005	16001-5390-0	KIT HOLDER, NOZZLE	ENS. PORTE-INJECTEUR	GRP. DUESENHALTER	3	-		
010	16001-5300-0	ASSY HOLDER, NOZZLE	ENS. PORTE-INJECTEUR	GRP. DUESENHALTER	3	-		
020	15841-9203-0	NUT	ECROU	MUTTER	3	-		
030	15841-5323-0	WASHER, ADJUSTING	RONDELLE DE REGLAGE	EINSTELLSCHEIBE	3	-		0.900mm
040	15841-5317-0	SPRING, NOZZLE	RESSORT D' INJECTEUR	FEDER	3	-		
050	15841-5335-0	PIECE, DISTANCE	CALE DE BLOCAGE	DISTANZSCHEIBE	3	-		
060	15841-5316-0	PUSH ROD	TIGE DE POUSSOIR	STOSSELSTANGE	3	-		
070	16475-5328-0	NUT, NOZZLE	ECROU D' INJECTEUR	MUTTER	3	-		
080	15841-9404-0	WASHER	RONDELLE	SCHEIBE	3	-		
090	16851-5361-0	PIECE, NOZZLE	ELEMENT D' INJECTEUR	DUESENSTUECK	3	-		
100	15841-9810-0	ASSY WASHER, ADJUST	ENS. RONDELLE	GRP. EINSTELLSCHEIBE	3	-		OPTION
110	15841-5323-0	WASHER, ADJUSTING	RONDELLE DE REGLAGE	EINSTELLSCHEIBE	3	-		0.900mm
110	15841-9851-0	WASHER, ADJUSTING	RONDELLE DE REGLAGE	EINSTELLSCHEIBE	3	-		0.925mm
110	15841-9852-0	WASHER, ADJUSTING	RONDELLE DE REGLAGE	EINSTELLSCHEIBE	3	-		0.950mm
110	15841-9853-0	WASHER, ADJUSTING	RONDELLE DE REGLAGE	EINSTELLSCHEIBE	3	-		0.975mm
110	15841-9854-0	WASHER, ADJUSTING	RONDELLE DE REGLAGE	EINSTELLSCHEIBE	3	-		1.000mm
110	15841-9855-0	WASHER, ADJUSTING	RONDELLE DE REGLAGE	EINSTELLSCHEIBE	3	-		1.025mm
110	15841-9856-0	WASHER, ADJUSTING	RONDELLE DE REGLAGE	EINSTELLSCHEIBE	3	-		1.050mm
110	15841-9857-0	WASHER, ADJUSTING	RONDELLE DE REGLAGE	EINSTELLSCHEIBE	3	-		1.075mm
110	15841-9858-0	WASHER, ADJUSTING	RONDELLE DE REGLAGE	EINSTELLSCHEIBE	3	-		1.100mm
110	15841-9859-0	WASHER, ADJUSTING	RONDELLE DE REGLAGE	EINSTELLSCHEIBE	3	-		1.125mm
110	15841-9860-0	WASHER, ADJUSTING	RONDELLE DE REGLAGE	EINSTELLSCHEIBE	3	-		1.150mm
110	15841-9861-0	WASHER, ADJUSTING	RONDELLE DE REGLAGE	EINSTELLSCHEIBE	3	-		1.175mm
110	15841-9862-0	WASHER, ADJUSTING	RONDELLE DE REGLAGE	EINSTELLSCHEIBE	3	-		1.200mm
110	15841-9863-0	WASHER, ADJUSTING	RONDELLE DE REGLAGE	EINSTELLSCHEIBE	3	-		1.225mm
110	15841-9864-0	WASHER, ADJUSTING	RONDELLE DE REGLAGE	EINSTELLSCHEIBE	3	-		1.250mm
110	15841-9865-0	WASHER, ADJUSTING	RONDELLE DE REGLAGE	EINSTELLSCHEIBE	3	-		1.275mm
110	15841-9866-0	WASHER, ADJUSTING	RONDELLE DE REGLAGE	EINSTELLSCHEIBE	3	-		1.300mm
110	15841-9867-0	WASHER, ADJUSTING	RONDELLE DE REGLAGE	EINSTELLSCHEIBE	3	-		1.325mm
110	15841-9868-0	WASHER, ADJUSTING	RONDELLE DE REGLAGE	EINSTELLSCHEIBE	3	-		1.350mm

↔ Interchangeable; ≠ not interchangeable; ← new for old; → old for new

# 0207

## NOZZLE HOLDER (COMPONENT PARTS) PORTE-INJECTEUR (PARTIES COMPOSANTES) DUSENHALTER (EINZEL-TEIL)



1G541-021-11

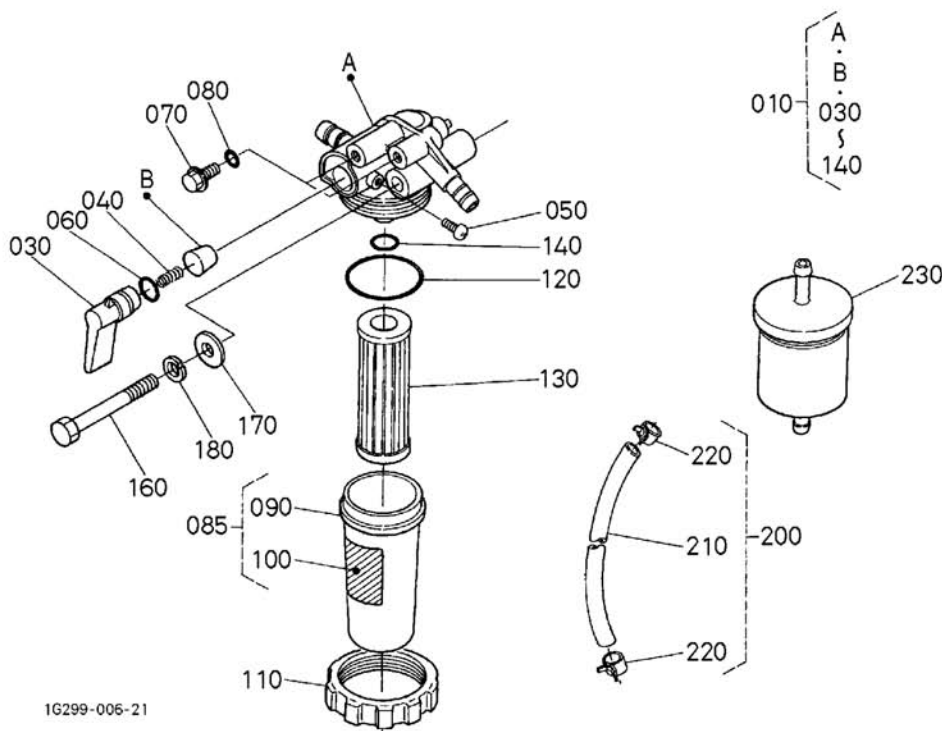
A: D902-E3B-EU-X7

REF. No. POS. No. BILD-Nr.	PART No. REFERENCE BESELL-Nr.	PART NAME	DESIGNATION	BEZEICHNUNG	Q'TY/S. No. Q'TE/No. S. STUECK/S. Nr.		I. C.	REMARKS REMARQUES BEMERKUNGEN
					A	B		
110	15841-9869-0	WASHER, ADJUSTING	RONDELLE DE REGLAGE	EINSTELLSCHEIBE	3	-		1. 375mm
110	15841-9870-0	WASHER, ADJUSTING	RONDELLE DE REGLAGE	EINSTELLSCHEIBE	3	-		1. 400mm
110	15841-9871-0	WASHER, ADJUSTING	RONDELLE DE REGLAGE	EINSTELLSCHEIBE	3	-		1. 425mm
110	15841-9872-0	WASHER, ADJUSTING	RONDELLE DE REGLAGE	EINSTELLSCHEIBE	3	-		1. 450mm
110	15841-9873-0	WASHER, ADJUSTING	RONDELLE DE REGLAGE	EINSTELLSCHEIBE	3	-		1. 475mm
110	15841-9874-0	WASHER, ADJUSTING	RONDELLE DE REGLAGE	EINSTELLSCHEIBE	3	-		1. 500mm
110	15841-9875-0	WASHER, ADJUSTING	RONDELLE DE REGLAGE	EINSTELLSCHEIBE	3	-		1. 525mm
110	15841-9876-0	WASHER, ADJUSTING	RONDELLE DE REGLAGE	EINSTELLSCHEIBE	3	-		1. 550mm
110	15841-9877-0	WASHER, ADJUSTING	RONDELLE DE REGLAGE	EINSTELLSCHEIBE	3	-		1. 575mm
110	15841-9878-0	WASHER, ADJUSTING	RONDELLE DE REGLAGE	EINSTELLSCHEIBE	3	-		1. 600mm
110	15841-9879-0	WASHER, ADJUSTING	RONDELLE DE REGLAGE	EINSTELLSCHEIBE	3	-		1. 625mm
110	15841-9880-0	WASHER, ADJUSTING	RONDELLE DE REGLAGE	EINSTELLSCHEIBE	3	-		1. 650mm
110	15841-9881-0	WASHER, ADJUSTING	RONDELLE DE REGLAGE	EINSTELLSCHEIBE	3	-		1. 675mm
110	15841-9882-0	WASHER, ADJUSTING	RONDELLE DE REGLAGE	EINSTELLSCHEIBE	3	-		1. 700mm
110	15841-9883-0	WASHER, ADJUSTING	RONDELLE DE REGLAGE	EINSTELLSCHEIBE	3	-		1. 725mm
110	15841-9884-0	WASHER, ADJUSTING	RONDELLE DE REGLAGE	EINSTELLSCHEIBE	3	-		1. 750mm
110	15841-9885-0	WASHER, ADJUSTING	RONDELLE DE REGLAGE	EINSTELLSCHEIBE	3	-		1. 775mm
110	15841-9886-0	WASHER, ADJUSTING	RONDELLE DE REGLAGE	EINSTELLSCHEIBE	3	-		1. 800mm
110	15841-9887-0	WASHER, ADJUSTING	RONDELLE DE REGLAGE	EINSTELLSCHEIBE	3	-		1. 825mm
110	15841-9888-0	WASHER, ADJUSTING	RONDELLE DE REGLAGE	EINSTELLSCHEIBE	3	-		1. 850mm
110	15841-9889-0	WASHER, ADJUSTING	RONDELLE DE REGLAGE	EINSTELLSCHEIBE	3	-		1. 875mm
110	15841-9890-0	WASHER, ADJUSTING	RONDELLE DE REGLAGE	EINSTELLSCHEIBE	3	-		1. 900mm
110	15841-9891-0	WASHER, ADJUSTING	RONDELLE DE REGLAGE	EINSTELLSCHEIBE	3	-		1. 925mm
110	15841-9892-0	WASHER, ADJUSTING	RONDELLE DE REGLAGE	EINSTELLSCHEIBE	3	-		1. 950mm
120	15841-5362-2	GASKET	JOINT	DICHTUNGSPLATTE	3	-		
130	19077-5365-0	SEAL, HEAT	JOINT DE CHALEUR	DICHTUNG	3	-		

↔ Interchangeable; ≠ not interchangeable; ← new for old; → old for new

0300

FUEL FILTER  
 FILTRE A CARBURANT  
 KRAFTSTOFFFILTER



1G299-006-21

A: D902-E3B-HAKO

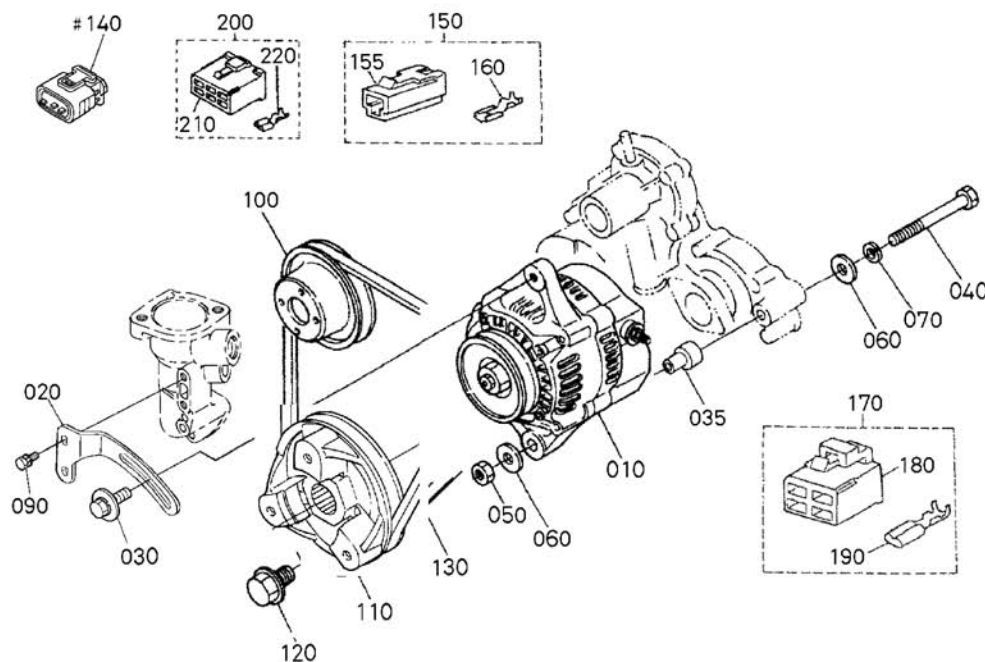
REF. No. POS. No. BILD-Nr.	PART No. REFERENCE BESELL-Nr.	PART NAME	DESIGNATION	BEZEICHNUNG	Q' TY/S. No. Q' TE/No. S. STUECK/S. Nr.		I. C.	REMARKS REMARQUES BEMERKUNGEN
					A	B		
010	15393-4301-7	ASSY FILTER, FUEL	ENS. FILTRE, COMBUST	GRP. KRAFTSTOFFFILTER	1	-		
020	-----	BLANK	BLANC	LEERE SPALTE	-	-		
030	14301-4352-2	LEVER, COCK	LEVIER DE ROBINET	HEBEL	1	-		
040	14301-4382-0	SPRING, VALVE	RESSORT DE SOUPAPE	VENTIL-FEDER	1	-		
050	14301-4383-0	SCREW, SET	VIS D' ARRET	ANSCHLAGSCHRAUBE	1	-		
060	14301-4384-0	O RING, LEVER	JOINT TORIQUE LVR.	O RING, HEBEL	1	-		
070	19204-4328-0	SCREW, AIR BLEEDER	VIS	SCHRAUBE	2	-		
080	04817-00060	O RING	JOINT TORIQUE	O RING	2	-		
085	1T251-4310-0	ASSY CUP, FILTER	ENS. CHAPEAU DE FILTR	GRP. FILTERTOPF	1	-		
090	1T021-4358-0	CUP, FILTER	CHAPEAU DE FILTRE	FILTERTOPF	1	-		
100	1A001-8843-0	LABEL, FUEL	ETIQUETTE	AUFKLEBER, KRAFTSTF.	1	-		
110	1T021-4359-0	RING, RETAINING	BAGUE DE RETENUE	HALTERING	1	-		
120	04816-00390	O RING, FILTER CUP	JOINT	O RING	1	-		
130	1T021-4356-0	ASSY ELEMENT	ENS. ELEMENT	FILTREINSATZ	1	-		
140	14301-4357-0	O RING, FILTER	JOINT TORIQUE FILT.	O RING	1	-		
150	-----	BLANK						
160	01153-50865	BOLT	VIS	BOLZEN	1	-		
170	04013-60080	WASHER, PLAIN	RONDELLE FREIN	SCHEIBE	1	-		
180	04512-60080	WASHER, SPRING	RONDELLE GROWER	FEDERRING	1	-		
190	-----	BLANK						
200	16863-4202-0	ASSY TUBE, FUEL	ENS. TUYAU CARBURANT	GRP. KRAFTSTOFFROHR	1	-		
210	09661-80300	TUBE, FUEL	TUYAU	KRAFTSTOFFROHR	1	-		
220	14911-4275-0	CLIP, PIPE	ATTACHE	ROHRKLEMME	2	-		
230	12581-4301-2	ASSY FILTER, FUEL	ENS. FILTRE, COMBUST	GRP. KRAFTSTOFFFILTER	1	-		

↔ Interchangeable; ≠ not interchangeable; ← new for old; → old for new



0402

ALTERNATOR AND PULLEY  
ALTERNATEUR  
WECHSELSTROMMASCHINE



1G961-008-14

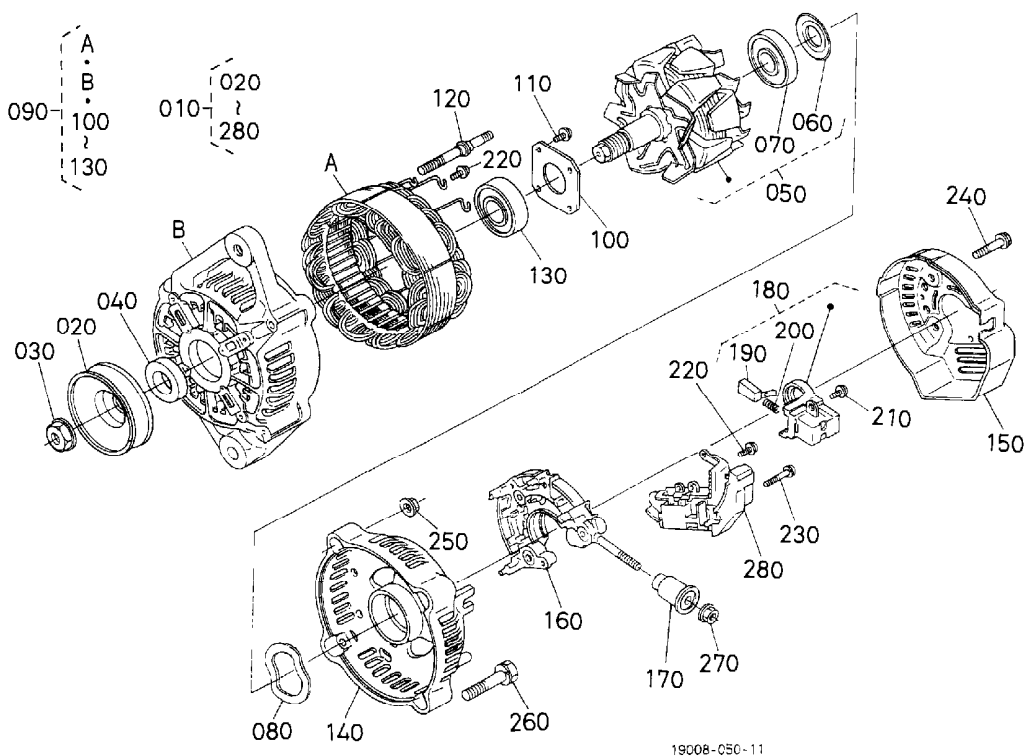
A:D902-E3B-HAKO

REF. No. POS. No. BILD-Nr.	PART No. REFERENCE BESELL-Nr.	PART NAME	DESIGNATION	BEZEICHNUNG	Q'TY/S. No. Q'TE/No. S. STUECK/S. Nr.		I. C.	REMARKS REMARQUES BEMERKUNGEN
					A	B		
010	16678-6401-2	ASSY ALTERNATOR	ALTERNATEUR COMPLET	GRP. WECHSELSTROMDYN.	1	-		12V 40A
020	17548-6442-0	STAY, ALTERNATOR	SUPPORT DE ALTERNAT.	DYNAMOSTANGE	1	-		
030	16871-9103-0	BOLT	VIS	BOLZEN	1	-		
035	19837-6437-4	COLLAR	COLLIER	HUELSE	1	-		
040	01153-50870	BOLT	VIS	BOLZEN	1	-		
050	02156-50080	NUT	ECROU	MUTTER	1	-		
060	04013-60080	WASHER, PLAIN	RONDELLE FREIN	SCHEIBE	2	-		
070	04512-60080	WASHER, SPRING	RONDELLE GROWER	FEDERRING	1	-		
080	---	BLANK	BLANC	LEERE SPALTE	-	-		
090	01023-50616	BOLT	VIS	BOLZEN	2	-		
100	15841-7425-0	PULLEY, FAN	POULIE VENTILATEUR	VENTILATORSCHIEBE	1	-		
110	1G952-7428-0	PULLEY, FAN DRIVE	POULIE ENTRAIN. VENT.	RIEMENSCHIEBE	1	-		
120	15881-9103-0	BOLT	VIS	BOLZEN	1	-		
130	15881-9701-0	V BELT	COURROIE	RIEMEN	1	-		34.51N
140	16678-6583-0	ASSY CONNECTOR	ENS. CONNECTEUR	GRP. ANSCHLUBE	1	-		
150	19215-6375-0	TERMINAL	BORNE	ANSCHLUBKLEMME	1	-		
155	11521-6592-0	CONNECTOR	CONNECTEUR	ANSCHLUBE	1	-		
160	11521-6597-0	TERMINAL	BORNE	ANSCHLUBKLEMME	1	-		
170	16662-6583-0	ASSY COUPLER, CONNec.	ENS. COUPLEUR CONNec.	GRP. KUPPLERANSCHLUBE	1	-		
180	11521-6586-0	CONNECTOR	CONNECTEUR	ANSCHLUBE	1	-		
190	19237-6591-0	TERMINAL	DEBORNE	ANSCHLUBKLEMME	4	-		
200	16645-6583-0	ASSY COUPLER	ENS. COUPLEUR	GRP. KUPPLER	1	-		
210	19872-6584-0	CONNECTOR	CONNECTEUR	ANSCHLUBE	1	-		
220	19237-6591-0	TERMINAL	DEBORNE	ANSCHLUBKLEMME	5	-		

↔ Interchangeable; ≠ not interchangeable; ← new for old; → old for new

0403

ALTERNATOR (COMPONENT PARTS)  
 ALTERNATEUR (PARTIES COMPOSANTES)  
 WECHSELSTROMMASCHINE (EINZEL-TEIL)



19008-050-11

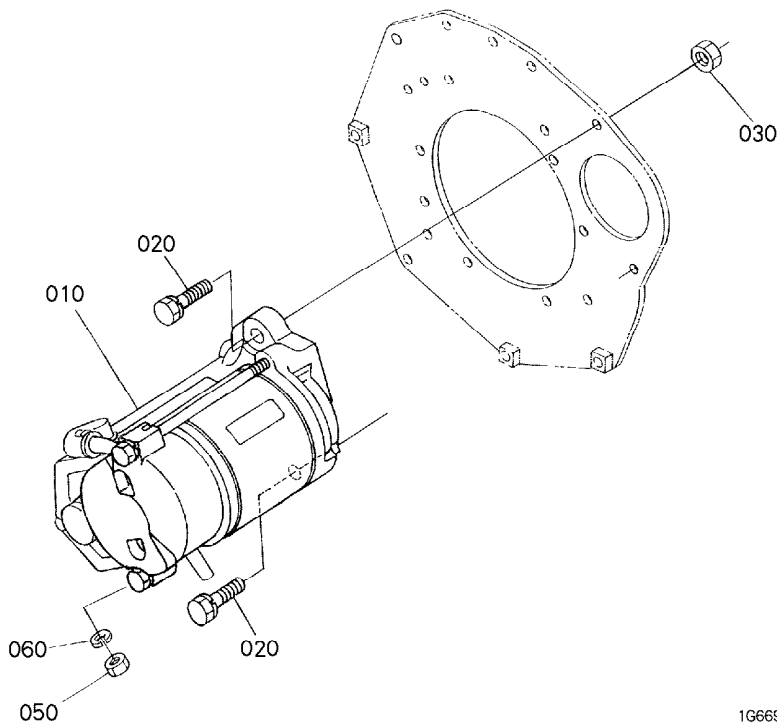
A: D902-E3B-EU-X7

REF. No. POS. No. BILD-Nr.	PART No. REFERENCE BESELL-Nr.	PART NAME	DESIGNATION	BEZEICHNUNG	QTY/S. No. G° TE/No. S. STUECK/S. Nr.		I. C.	REMARKS REMARQUES BEMERKUNGEN
					A	B		
010	16678-6401-2	ASSY ALTERNATOR	ALTERNATEUR COMPLET	GRP. WECHSELSTROMDYN.	1	-		
020	15881-6411-0	PULLEY, DYNAMO	POULIE D'ALTERNATEUR	RIEMENSCHNUR, DYNAMO	1	-		
030	15881-9201-0	NUT	ECROU	MUTTER	1	-		
040	15881-6415-0	COLLAR	COLLIER	HUELSE	1	-		
050	66436-6404-0	ROTOR	ROTOR	ROTOR	1	-		
060	15881-6480-0	COVER, BEARING	COUVERCLE	DECKEL	1	-		
070	16652-6477-0	BEARING, BALL	ROULEMENT A BILLES	KUGELLAGER	1	-		
080	15881-6481-0	WASHER, THRUST	RONDELLE DE BUTEE	DRUCKSCHEIBE	1	-		
090	66436-6402-0	ASSY FRAME, DRIVE END	ENS. BATI ARRIERE	GRP. ANTRIEBSRAHMEN	1	-		
100	15881-6471-0	PLATE, RETAINER	PLAQUE RETENUE	HALTEPLATTE	1	-		
110	15881-9301-0	SCREW, ROUND HEAD	VIS A TETE RONDE	RUNDKOPFSCHRAUBE	4	-		
120	15881-6426-0	BOLT, THROUGH	VIS. PASSANT	DURCHGEHENDERBOLZEN	2	-		
130	16652-6478-0	BEARING, BALL	ROULEMENT A BILLES	KUGELLAGER	1	-		
140	16678-6406-0	FRAME, END	BATI	RAHMEN	1	-		
150	16678-6423-0	COVER, END	PALIER ARRIERE	DECKEL	1	-		
160	15881-6485-0	ASSY RECTIFIER	REDRESSEUR	MONT. GLEICHRICHTER	1	-		
170	15881-6490-0	BUSH, INSULATION	BAGUE ISOLANTE	BUCHSE	1	-		
180	16652-6431-0	HOLDER, BRUSH	PORTE-BALAI	BUERSTEN HALTER	1	-		
190	15881-6409-0	BRUSH	PATTE D'ATTACHE	BUERSTE	2	-		
200	15881-6433-0	SPRING, BRUSH	RESSORT DE BALAI	SCHLEIFBUERSTENFEDER	2	-		
210	15881-9302-0	SCREW, ROUND HEAD	VIS A TETE RONDE	RUNDKOPFSCHRAUBE	2	-		
220	15881-9303-0	SCREW, ROUND HEAD	VIS A TETE RONDE	RUNDKOPFSCHRAUBE	6	-		
230	15881-9304-0	SCREW, ROUND HEAD	VIS A TETE RONDE	RUNDKOPFSCHRAUBE	1	-		
240	15881-9104-0	BOLT	VIS	BOLZEN	3	-		
250	15881-9202-0	NUT	ECROU	MUTTER	2	-		
260	15881-9105-0	BOLT	VIS	BOLZEN	2	-		
270	14182-9203-0	NUT	ECROU	MUTTER	1	-		
280	16652-6460-0	ASSY REGULATOR	REGULATEUR	REGULATOR	1	-		

↔ Interchangeable; ≠ not interchangeable; ← new for old; → old for new

# 0404

# STARTER DEMARREUR ANLASSER



1G669-013-13

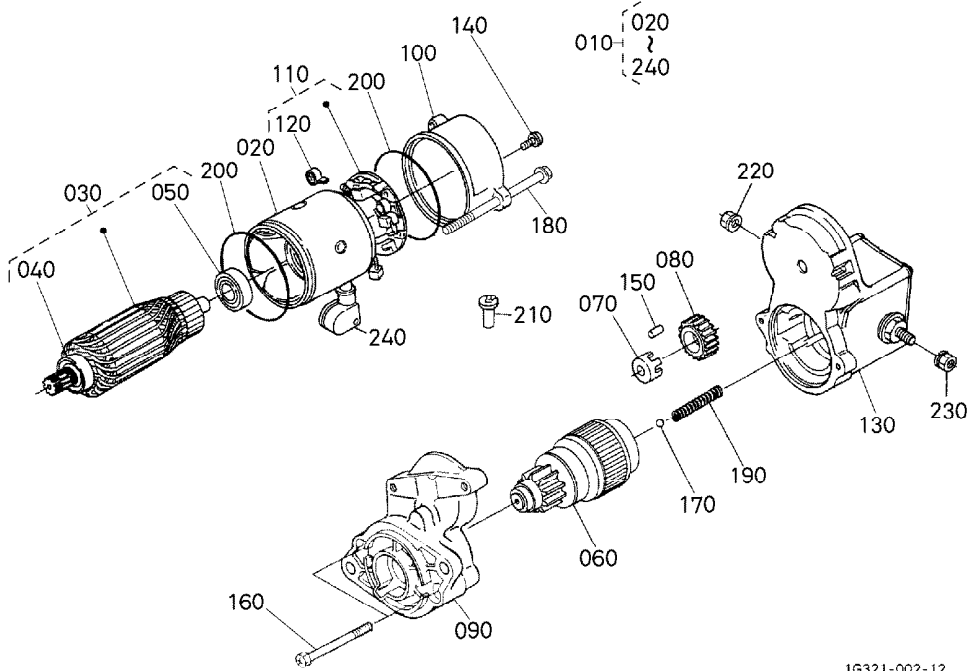
A: D902-E3B-EU-X7

REF. No. POS. No. BILD-Nr.	PART No. REFERENCE BESELL-Nr.	PART NAME	DESIGNATION	BEZEICHNUNG	Q'TY/S. No. Q'TE/No. S. STUECK/S. Nr.		I. C.	REMARKS REMARQUES BEMERKUNGEN
					A	B		
010	19269-6301-0	ASSY STARTER	ENS. DEMARREUR	GRP. ANLASSER	1	-		12V1.4KW
020	01123-50830	BOLT	VIS	BOLZEN	2	-		
030	02156-50080	NUT	ECROU	MUTTER	2	-		
040	---	BLANK	BLANC	LEERE SPALTE	-	-		
050	02156-50080	NUT	ECROU	MUTTER	1	-		
060	04512-60080	WASHER, SPRING	RONDELLE GROWER	FEDERRING	1	-		



# 0405

## STARTER (COMPONENT PARTS) DEMARREUR (PARTIES COMPOSANTES) ANLASSER (EINZEL-TEIL)



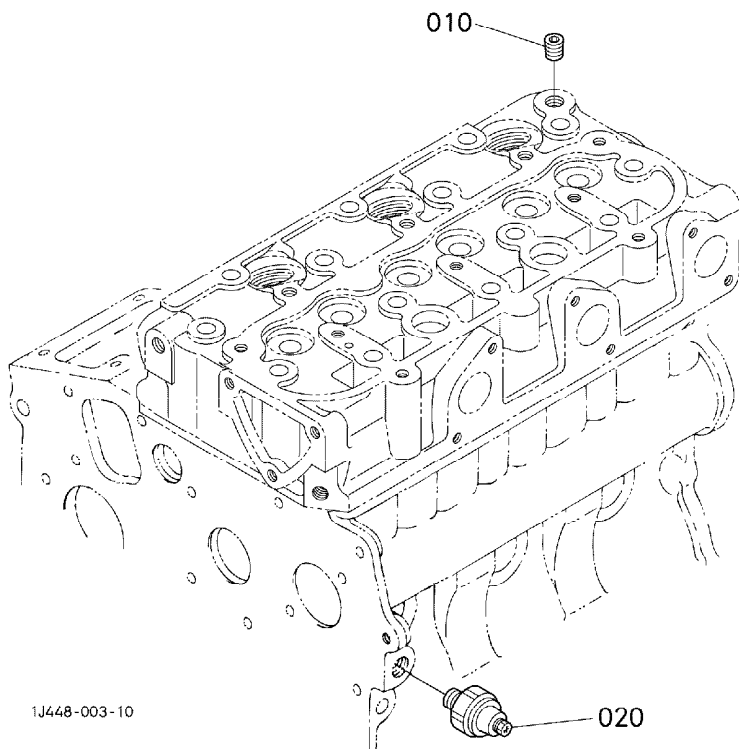
A: D902-E3B-EU-X7

REF. No. POS. No. BILD-Nr.	PART No. REFERENCE BESELL-Nr.	PART NAME	DESIGNATION	BEZEICHNUNG	QTY/S. No. Q. TE/No. S. STUECK/S. Nr.		I. C.	REMARKS REMARQUES BEMERKUNGEN
					A	B		
010	19269-6301-0	ASSY STARTER	ENS. DEMARREUR	GRP. ANLASSER	1	-		
020	11197-6308-0	ASSY YOKE	ENS. CHAPE	GRP. GABELGELENK	1	-		
030	11197-6307-0	ASSY ARMATURE	ENS. ARMATURE	GRP. ARMATUR	1	-		
040	11460-6350-0	BEARING	ROULEMENT	LAGER	1	-		
050	11460-6353-0	BEARING	ROULEMENT	LAGER	1	-		
060	16611-6304-0	CLUTCH, OVER RUNNING	EMBRAYAGE A INERTIE	AUFLAUFKUPPLUNG	1	-		
070	11460-6311-0	RETAINER	SUPPORT	HALTESCHEIBE	1	-		
080	11460-6327-0	GEAR	ENGRENAGE	GETRIEBE	1	-		
090	16611-6303-0	FRAME, DRIVE END	BATI	ANTRIEBSRAHMEN	1	-		
100	17341-6320-0	FRAME, END	BATI	RAHMEN	1	-		
110	11197-6338-0	ASSY HOLDER, BRUSH	ENS. SUPPORT	GRP. BUERSTENHALTER	1	-		
120	15401-6339-0	SPRING, BRUSH	RESSORT DE BALAI	SCHLEIFBUERSTENFEDER	4	-		
130	16285-6302-0	ASSY SWITCH, MAGNETIC	ENS. INTERRUPTEUR	GRP. MAGNETSCHALTER	1	-		
140	15511-6376-0	ASSY BOLT	ENS. VIS	GRP. BOLZEN	2	-		
150	19212-6310-0	ROLLER	ROULEAU	ROLLE	5	-		
160	11460-9331-0	BOLT	VIS	BOLZEN	2	-		
170	19212-9713-0	BALL	BILLE	KUGEL	1	-		
180	11197-6332-0	BOLT	VIS	BOLZEN	2	-		
190	11460-6312-0	SPRING	RESSORT	FRUEHLING	1	-		
200	15511-9666-0	O RING	JOINT TORIQUE	O RING	2	-		
210	16285-6357-0	PIPE, DRAIN	TUYAU DE DRAINAGE	DRANLEITUNG	1	-		
220	16285-9201-0	NUT, HEXAGON	ECROU HEXAGONAL	MUTTER	1	-		
230	13963-9201-0	NUT, HEXAGON	ECROU HEXAGONAL	MUTTER	1	-		
240	11173-6313-0	COVER, TERMINAL	COUVERGLE	DECKEL	1	-		

↔ Interchangeable; ≠ not interchangeable; ← new for old; → old for new

0406

OIL SWITCH/THERMOMETER AND PLUG  
CONTACT A HUILE/THERMOMETRE ET OBTURATEUR  
OELSCHALTER/THERMOMETRER UND VERSCHLUSSSTOPFEN



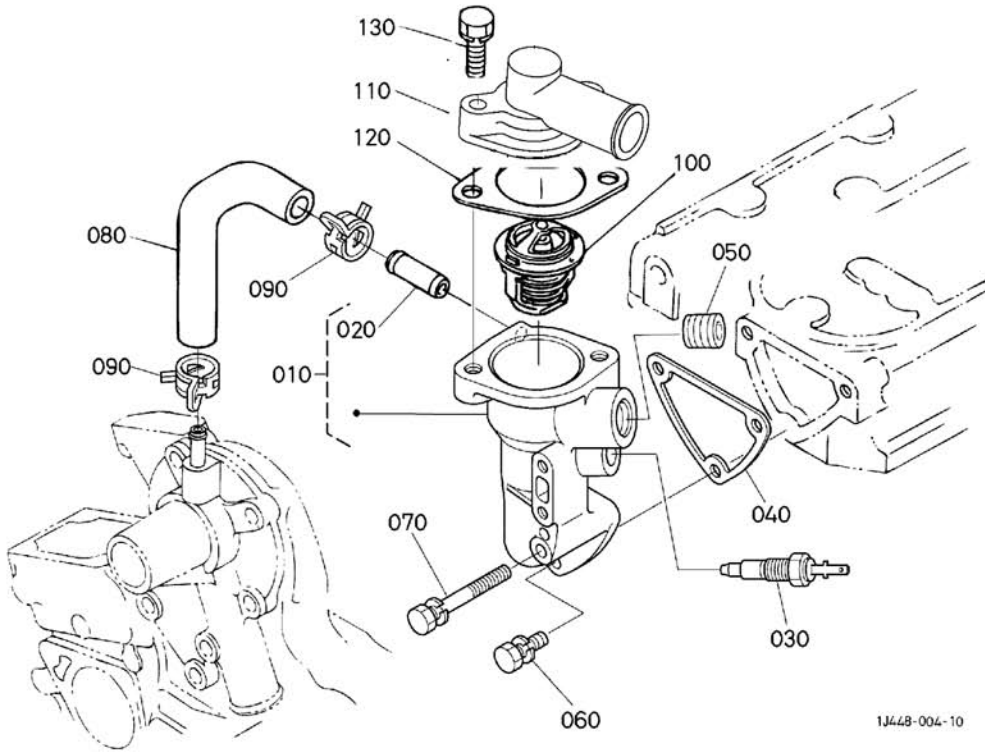
A : D902-E3B-EU-X7

REF. No. POS. No. BILD-Nr.	PART No. REFERENCE BESELL-Nr.	PART NAME	DESIGNATION	BEZEICHNUNG	QTY/S. No. QTE/No. S. STUECK/S. Nr.		I. C.	REMARKS REMARQUES BEMERKUNGEN
					A	B		
010	15841-9602-0	PLUG	BOUCHON	STOPFEN	1	-		
020	15841-3901-0	SWITCH, OIL	MANO-CONTACT D' HUILE	OELDRUCKSCHALTER	1	-		

↔ Interchangeable; ≠ not interchangeable; ← new for old; → old for new

0500

**WATER FLANGE AND THERMOSTAT  
BRIDE A EAU ET THERMOSTAT  
WASSERFLANSCH UND THERMOSTAT**



1J448-004-10

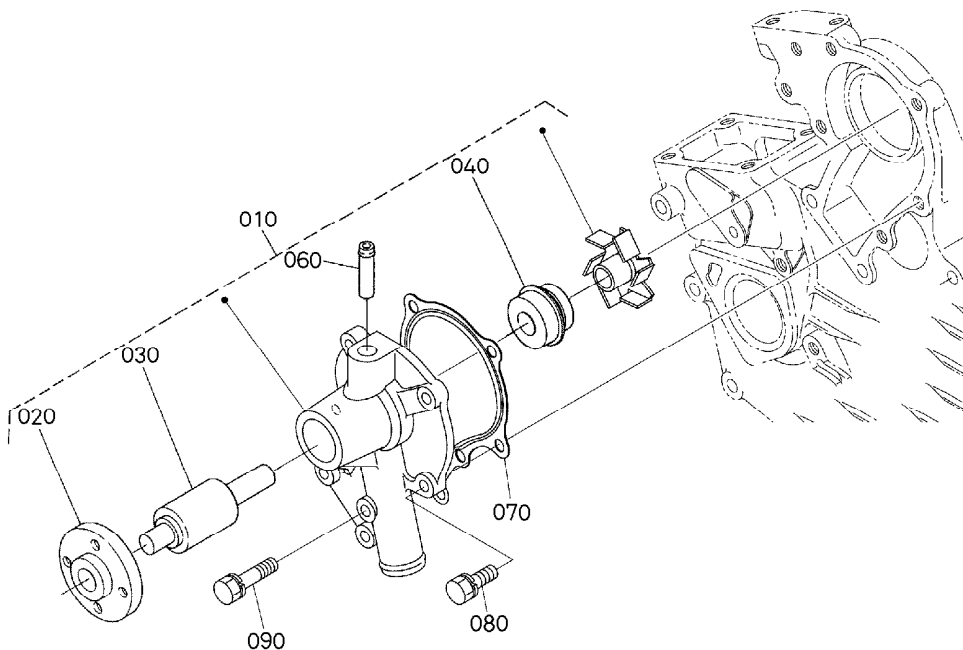
A:D902-E3B-HAKO

REF. No. POS. No. BILD-Nr.	PART No. REFERENCE BESELL-Nr.	PART NAME	DESIGNATION	BEZEICHNUNG	Q' TY/S. No. Q' TE/No. S. STUECK/S. Nr.		I. C.	REMARKS REMARQUES BEMERKUNGEN
					A	B		
010	1E051-7270-2	COMP. FLANGE, WATER	BRIDE A EAU COMPLET	KOMP. FLANSCH	1	-		
020	16241-7337-0	PIPE, WATER RETURN	TUYAU RETOUR D' EAU	WASSERROHR	1	-		
030	16222-8304-0	ASSY THERMOSWITCH	ENS. THERMOINTERRUPT.	GRP. THERMOZUENDSCHA.	1	-		
040	15841-7292-3	GASKET, WATER FLANGE	JOINT DE BRIDE A EAU	DICHTUNGWASSERFLANS.	1	-		
050	1A021-9602-0	PLUG	BOUCHON	STOPFEN	1	-		
060	01023-50616	BOLT	VIS	BOLZEN	2	-		
070	01023-60650	BOLT	VIS	BOLZEN	1	-		
080	16851-7335-0	PIPE, WATER RETURN	TUYAU RETOUR D' EAU	WASSERROHR	1	-		
090	16241-7336-0	BAND, PIPE	COLLIER DE TUYAU	ROHRBAND	2	-		
100	19434-7301-4	ASSY THERMOSTAT	THERMOSTAT COMP.	GRP. THERMOSTAT	1	-		
110	1G820-7326-0	COVER, THERMOSTAT	COUV. DE THERMOSTAT	DECKEL, THERMOSTAT	1	-		
120	16221-7327-0	GASKET, THERMOSTAT	JOINT	DICHTUNG	1	-		
130	01123-50825	BOLT	VIS	BOLZEN	2	-		

(↔) Interchangeable; ≠ not interchangeable; ← new for old; → old for new

# 0501

## WATER PUMP POMPE A EAU WASSERPUMPE



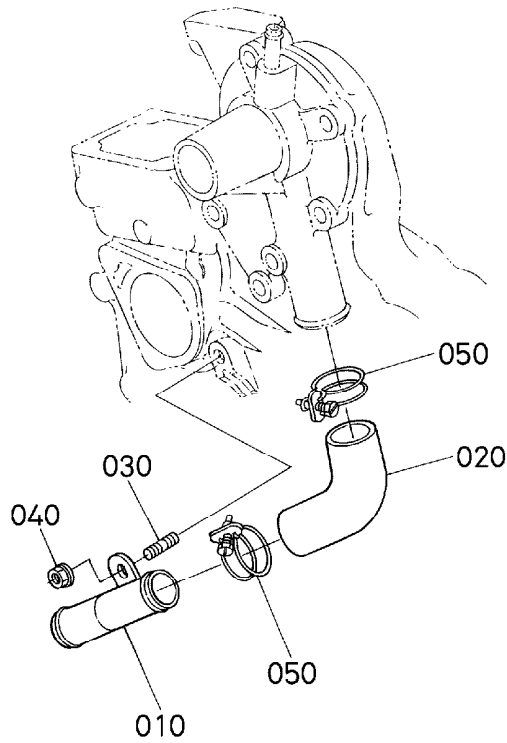
1G460-022-14

A: D902-E3B-EU-X7

REF. No. POS. No. BILD-Nr.	PART No. REFERENCE BESELL-Nr.	PART NAME	DESIGNATION	BEZEICHNUNG	QTY/S. No. Q' TE/No. S. STUECK/S. Nr.		I. C.	REMARKS REMARQUES BEMERKUNGEN
					A	B		
010	1E051-7303-0	ASSY PUMP, WATER	ENS. POMPE A EAU	GRUPPE WASSERPUMPE	1	-		
020	15852-7352-0	FLANGE, WATER PUMP	BRIDE DE POMPE A EAU	FLANSCH, PUMPE	1	-		
030	15852-7355-0	BEARING	ROULEMENT	LAGER	1	-		
040	15481-7305-0	ASSY SEAL, MECHANICAL	ENS. JOINT MECANIQUE	GRP. MECH. DICHTUNG	1	-		
050	----	BLANK	BLANC	LEERE SPALTE	-	-		
060	15852-7334-0	PIPE, WATER RETURN	TUYAU RETOUR D' EAU	WASSERROHR	1	-		
070	16871-7343-0	GASKET, WATER PUMP	JOINT DE POMPE A EAU	DICHTUNG, WASSERPUMPE	1	-		
080	01023-50622	BOLT	VIS	BOLZEN	4	-		
090	01023-50638	BOLT	VIS	BOLZEN	1	-		

0503

WATER PIPE  
TUYAU D'EAU  
WASSERROHR



1G957-003-11

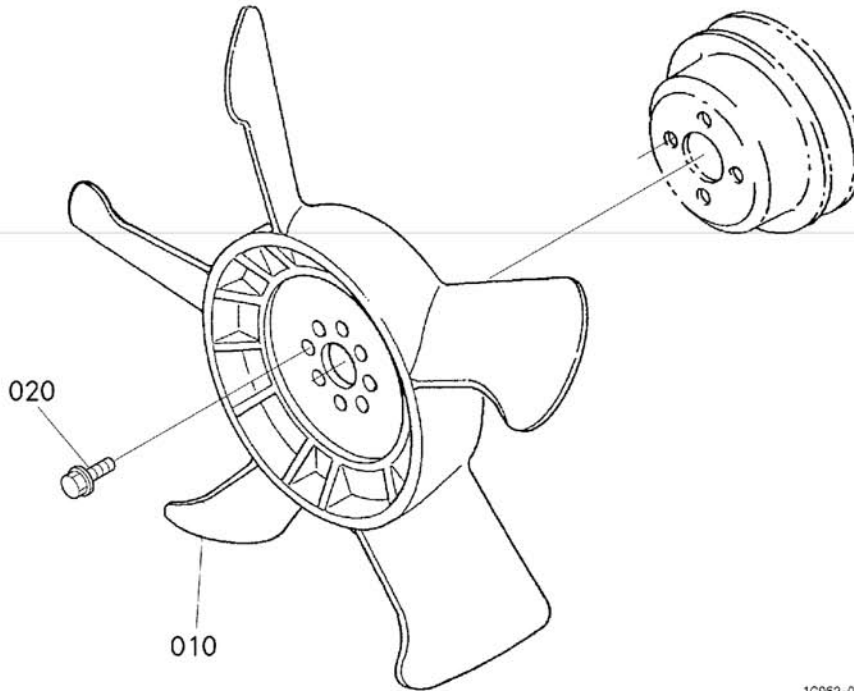
A: D902-E3B-EU-X7

REF. No. POS. No. BILD-Nr.	PART No. REFERENCE BESELL-Nr.	PART NAME	DESIGNATION	BEZEICHNUNG	Q' TY/S. No. Q' TE/No. S. STUECK/S. Nr.		I. C.	REMARKS REMARQUES BEMERKUNGEN
					A	B		
010	16805-7286-0	PIPE, WATER	TUYAU D'EAU	WASSERROHR	1	-		
020	16805-7287-0	HOSE, WATER	TUYAU D'EAU	SCHLAUCH	1	-		
030	15841-9151-0	STUD	GOUJON	STEBBOLZEN	1	-		
040	02751-50060	NUT, FLANGE	ECROU A EMBASE	FLANSCHEN-MUTTER	1	-		
050	15841-7296-0	BAND, PIPE	COLLIER DE TUYAU	ROHRBAND	2	-		

↔ Interchangeable; ≠ not interchangeable; ← new for old; → old for new

0504

FAN  
VENTILATEUR  
VENTILATOR



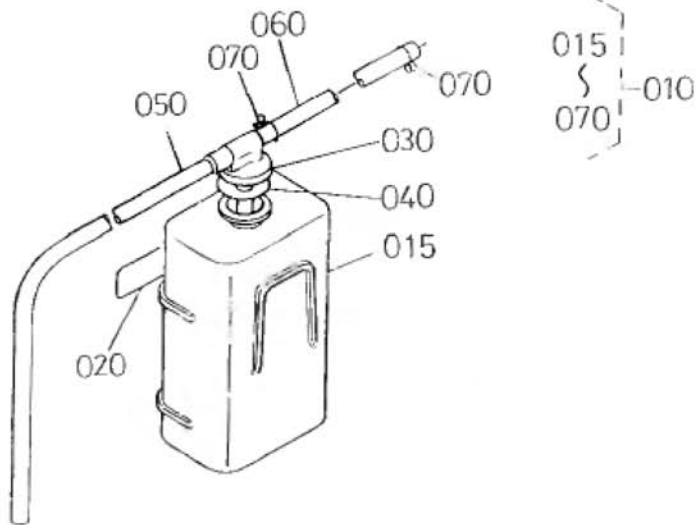
10962-019-10

A: D902-E3B-HAKO

REF. No. POS. No. BILD-Nr.	PART No. REFERENCE BESELL-Nr.	PART NAME	DESIGNATION	BEZEICHNUNG	Q' TY/S. No. Q' TE/No. S. STUECK/S. Nr.		I. C.	REMARKS REMARQUES BEMERKUNGEN
					A	B		
010	16264-7411-0	FAN	VENTILATEUR	VENTILATOR	1	-		
020	01754-50610	BOLT, FLANGE	VIS DE BUTEE	FLANSCHEN-BOLZEN	4	-		

↔ Interchangeable; ≠ not interchangeable; ← new for old; → old for new

# 0505 RESERVE TANK



EG267-005-20

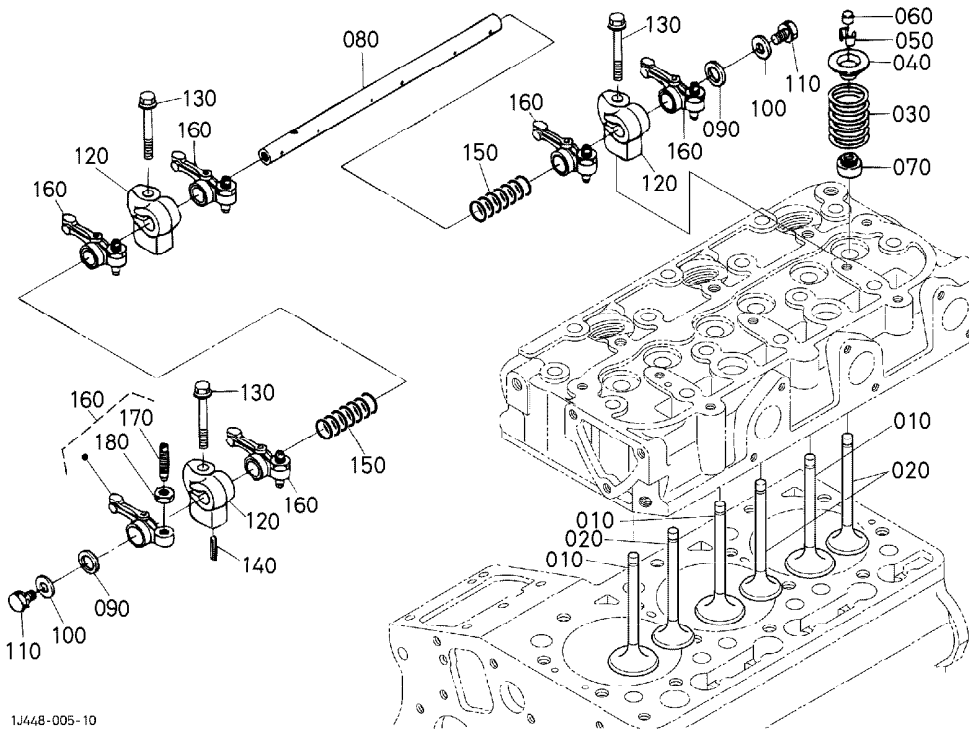
A: D902-E3B-HAKO

REF. No.	PART No.	PART NAME	Q' TY./S. No.		I. C.	REMARKS
			A	B		
010	15531-7240-2	ASSY TANK, RESERVE	1	-		
015	15531-7241-0	BODY, TANK	1	-		
020	15501-8821-0	LABEL, CAUTION	1	-		
030	15531-7242-2	CAP	1	-		
040	15531-7243-2	GASKET	1	-		
050	15471-7244-0	PIPE, WATER OVER FLOW	1	-		
060	15531-7244-2	PIPE, WATER OVER FLOW	1	-		
070	15501-7247-0	CLIP, PIPE	2	-		
			1	-		
			1	-		

↔ Interchangeable, ≠ not interchangeable, ← new for old, → old for new

# 0600

## VALVE AND ROCKER ARM SOUPAPES ET CULBUTEURS VENTIL UND KIPPENARM



1J44B-005-10

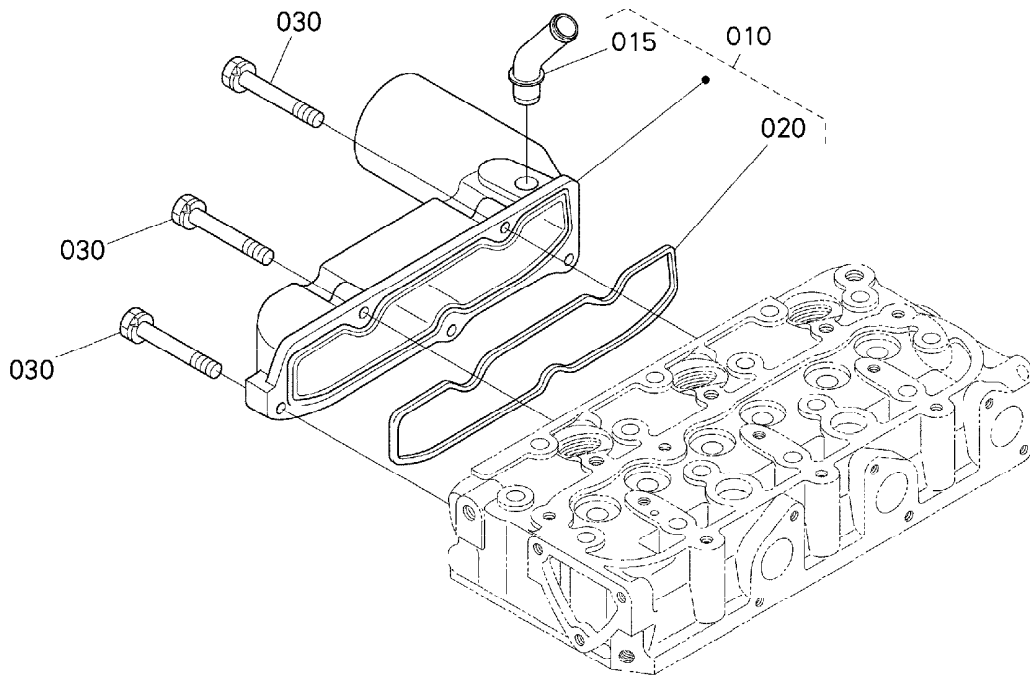
A: D902-E3B-EU-X7

REF. No. POS. No. BILD-Nr.	PART No. REFERENCE BESELL-Nr.	PART NAME	DESIGNATION	BEZEICHNUNG	Q'TY/S. No. Q'TE/No S. STUECK/S. Nr.		I. C.	REMARKS REMARQUES BEMERKUNGEN
					A	B		
010	1G687-1311-0	VALVE, INLET	SOUPAPE D'ADMISSION	EINLASSVENTIL	3	-		
020	1G687-1312-0	VALVE, EXHAUST	SOUPAPE D'ECHAPMENT	AUSLASSVENTIL	3	-		
030	14601-1324-0	SPRING, VALVE	RESSORT DE SOUPAPE	VENTIL-FEDER	6	-		
040	14601-1333-0	RETAINER, SPRING	ARRETOIR DE RESSORT	HALTBUEGEL, FEDER	6	-		
050	14601-1336-0	COLLET, VALVE SPRING	DEMI CLAVETTE	KLEMMSCHEIBE	6	-		SET
060	16851-1328-0	CAP, VALVE	CHAPAU DE SOUPAPE	VENTILKAPPE	6	-		
070	11420-1315-0	SEAL, VALVE STEM	JOINT DE SOUPAPE	VENTILDICHTUNG	6	-		
080	1G962-1426-2	SHAFT, ROCKER ARM	ARBRE DE CULBUTEUR	KIPPEBELWELLE	1	-		
090	16871-1443-0	WASHER	RONDELLE	SCHEIBE	2	-		
100	15841-9402-2	WASHER, PLAIN	RONDELLE FREIN	SCHEIBE	2	-		
110	01023-50610	BOLT	VIS	BOLZEN	2	-		
120	1G460-1435-0	BRACKET, ROCKER ARM	SUPPORT DE CULBUTEUR	KIPPEBELHALTER	3	-		
130	01754-50640	BOLT, FLANGE	VIS DE BUTEE	FLANSCHEN-BOLZEN	3	-		
140	05411-00420	PIN, SPRING	GOUPILLE-RESSORT	STIFT, FRUEHLING	1	-		
150	1G460-1431-2	SPRING, ROCKER ARM	RESSORT	FRUEHLING	2	-		
160	15841-1403-0	ASSY ROCKER ARM	ENS. CULBUTEURS	GRP. KIPPEBEL	6	-		
170	15841-1423-0	SCREW, ADJUSTING	VIS DE REGLAGE	STELLSCHRAUBE	6	-		
180	14601-1424-0	NUT	ECROU	MUTTER	6	-		

↔ Interchangeable: ≠ not interchangeable: ← new for old: → old for new



# 0601 INLET MANIFOLD COLLECTEUR D' ADMISION ANSAUGENLEITUNG



1G447-007-11

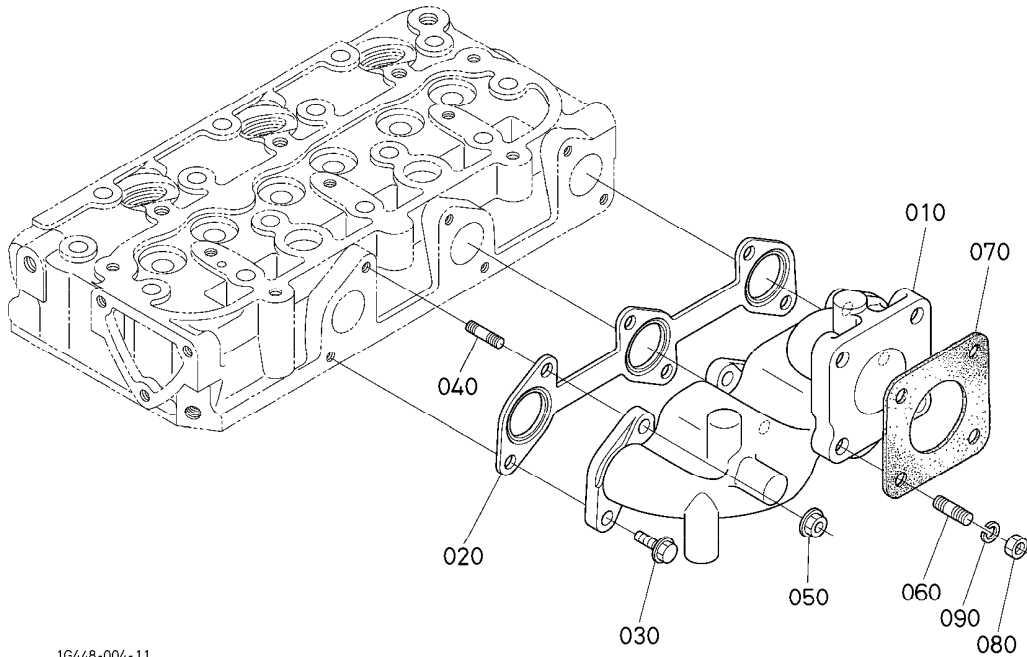
A: D902-E3B-EU-X7

REF. No. POS. No. BILD-Nr.	PART No. REFERENCE BESELL-Nr.	PART NAME	DESIGNATION	BEZEICHNUNG	QTY/S. No. QTE/No S. STUECK/S. Nr.		I. C.	REMARKS REMARQUES BEMERKUNGEN
					A	B		
010	1G960-1177-0	ASSY MANIFOLD, INLET	ENS. COLLECTEUR D' AD.	GRP. ANSAUG-ROHRKRUE.	1	-		
015	1G960-0555-0	PIPE, BREATHER	TUYAU DE REINFLARD	ENTLUFTUNGSRÖHR	1	-		
020	1G962-1182-0	GASKET, IN-MANIFOLD	JOINT DE COLL. ADM.	DICHTUNG ANSAUGROHR	1	-		
030	01023-50625	BOLT	VIS	BOLZEN	5	-		

↔ Interchangeable; ≠ not interchangeable; ← new for old; → old for new

0602

EXHAUST MANIFOLD  
COLLECTEUR D' ECHAPPEMENT  
AUSPUFFRUEMMER



1G448-004-11

A: D902-E3B-EU-X7

REF. No. POS. No. BILD-Nr.	PART No. REFERENCE BESELL-Nr.	PART NAME	DESIGNATION	BEZEICHNUNG	Q' TY/S. No. G' TE/No. S. STUECK/S. Nr.		I. C.	REMARKS REMARQUES BEMERKUNGEN
					A	B		
010	1G962-1231-0	MANIFOLD, EXHAUST	COLLECTEUR D' ECHAPP.	AUSPUFFROHR	1	-		
020	1G962-1235-0	GASKET, EX-MANIFOLD	JOINT DE COLL. ECHAP.	DICHTUNG, AUSPUFFPOHR	1	-		
030	01759-50616	BOLT, UBS	VIS	BOLZEN	3	-		
040	01513-50618	STUD	GOUJON	STEBBOLZEN	3	-		
050	02756-50060	NUT, UBS	ECROU	MUTTER	3	-		
060	01513-50822	STUD	GOUJON	STEBBOLZEN	4	-		
070	15263-1237-0	GASKET, MUFFLER NA	JOINT	DICHTUNG, AUSPUFFT. NA	1	-		
080	02156-50080	NUT	ECROU	MUTTER	4	-		
090	04512-60080	WASHER, SPRING	RONDELLE GROWER	FEDERRING	4	-		

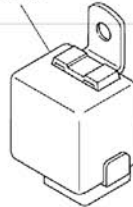
↔ Interchangeable; ≠ not interchangeable; ← new for old; → old for new

0800

GLOW LAMP AND TIMER  
 INDICATEUR DE PRECHAUFFAGE ET TEMPORISATEUR  
 GLUEHLAMPE UND ZEITMESSER

010

020



1J448-013-10

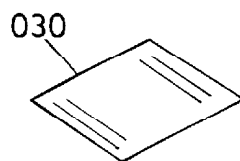
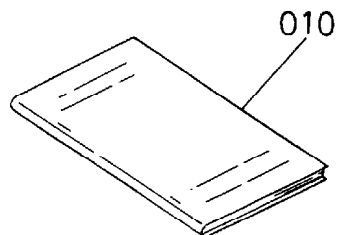
A: D902-E3B-HAKO

REF. No. POS. No. BILD-Nr.	PART No. REFERENCE BESELL-Nr.	PART NAME	DESIGNATION	BEZEICHNUNG	Q' TY/S. No. Q' TE/No. S. STUECK/S. Nr.		I. C.	REMARKS REMARQUES BEMERKUNGEN
					A	B		
010	- / -							
020	T0070-3141-0	TIMER, KEY STOP	TEMPORISATEUR	Relais Abstellhubmagnet	1	-		

(↔) Interchangeable; ≠ not interchangeable; ← new for old; → old for new

0809

**LABEL AND OPERATOR'S MANUAL  
 ETIQUETTE ET MANUEL DE L'UTILISATEUR  
 ETIKETTE UND HANDHABUNG-GEBRAUCHSANWEISUNG**



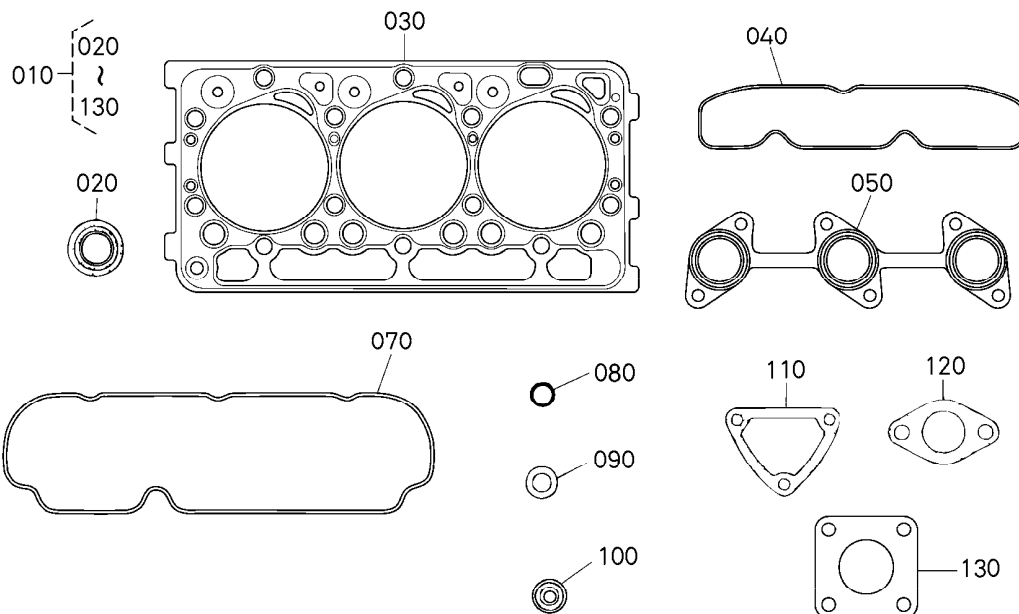
6A120-018-11

A:D902-E3B-EU-X7

REF. No. POS. No. BILD-Nr.	PART No. REFERENCE BESELL-Nr.	PART NAME	DESIGNATION	BEZEICHNUNG	Q'TY/S. No. Q'TE/No. S. STUECK/S. Nr.		I. C.	REMARKS REMARQUES BEMERKUNGEN
					A	B		
010	1G689-8916-0	OPERATOR'S MANUAL	MANUEL DE L'UTILISA.	DETDIENUNGSANLEITUNG	1	-		
020	---	BLANK	BLANC	LEERE SPALTE	-	-		
030	1G511-8981-5	STATEMENT, WARRANTY	DECLARATION, GARANTIE	GARANTIE ERKLAERUNG	1	-		#
030	1G511-8981-6	STATEMENT, WARRANTY	DECLARATION, GARANTIE	GARANTIE ERKLAERUNG	$\leq 8BZ999$	-		#
					$\geq 8C0001$			← #

↔ Interchangeable; ≠ not interchangeable; ← new for old; → old for new

090001 GASKET KIT [OPTION]  
 JEU DE JOINTS [OPTION]  
 DICHTUNG-GERAET [OPTION]



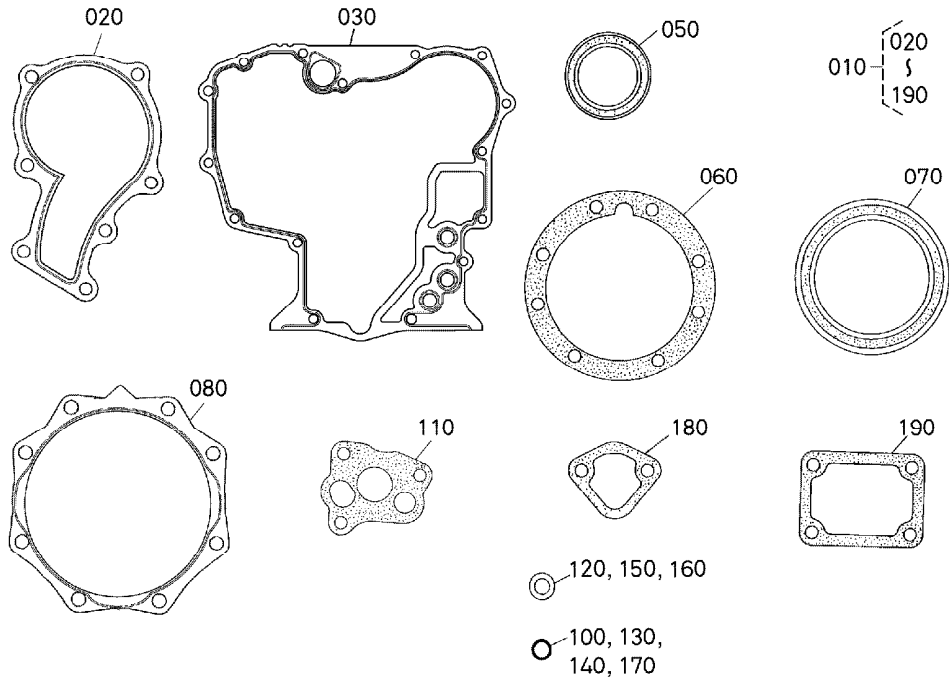
1G448-005-13

A:D902-E3B-EU-X7

REF. No. POS. No. BILD-Nr.	PART No. REFERENCE BESELL-Nr.	PART NAME	DESIGNATION	BEZEICHNUNG	Q'TY./S. No. G' TE/No. S. STUECK/S. Nr.		I. C.	REMARKS REMARQUES BEMERKUNGEN
					A	B		
010	1G823-9935-4	KIT GASKET, UPPER	JEU DE JOINTS SUPER.	OBERDICHTUNGENTAS.	1	-		
020	11420-1315-0	SEAL, VALVE STEM	JOINT DE SOUPEPE	VENTILDICHTUNG	6	-		
030	1G962-0331-3	GASKET, CYLINDER HEAD	JOINT	DICHTUNG, ZYLINDERKOPF	1	-		
040	1G962-1182-0	GASKET, IN-MANIFOLD	JOINT DE COLL. ADM.	DICHTUNG ANSAUGROHR	1	-		
050	1G962-1235-0	GASKET, EX-MANIFOLD	JOINT DE COLL. ECHAP.	DICHTUNG, AUSPUFFPOHR	1	-		
060	---	BLANK	BLANC	LEERE SPALTE	-	-		
070	1G962-1452-2	GASKET, HEAD COVER	JOINT COUVRE-CULASSE	DICHTUNG, KOPFDECKEL	1	-		
080	04814-50300	O RING	JOINT TORIQUE	O RING	1	-		
090	15841-5362-2	GASKET	JOINT	DICHTUNGSPLATTE	3	-		
100	19077-5365-0	SEAL, HEAT	JOINT DE CHALEUR	DICHTUNG	3	-		
110	15841-7292-3	GASKET, WATER FLANGE	JOINT DE BRIDE A EAU	DICHTUNGWASSERFLANS.	1	-		
120	16221-7327-0	GASKET, THERMOSTAT	JOINT	DICHTUNG	1	-		
130	15263-1237-0	GASKET, MUFFLER NA	JOINT	DICHTUNG, AUSPUFFT. NA	1	-		

↔ Interchangeable; ≠ not interchangeable; ← new for old; → old for new

**090002 GASKET KIT [OPTION]**  
**JEU DE JOINTS [OPTION]**  
**DICHTUNG-GERAET [OPTION]**



1G962-014-15

A:D902-E3B-EU-X7

REF. No. POS. No. BILD-Nr.	PART No. REFERENCE BESELL-Nr.	PART NAME	DESIGNATION	BEZEICHNUNG	QTY/S. No. QTE/No. S. STUECK/S. Nr.		I. C.	REMARKS REMARQUES BEMERKUNGEN
					A	B		
010	1G962-9936-5	KIT GASKET, LOWER	JEU DE JOINTS INFER.	UNTERDICHTUNGENTASC.	1	-		
020	16871-7343-0	GASKET, WATER PUMP	JOINT DE POMPE A EAU	DICHTUNG, WASSERPUMPE	1	-		
030	1G962-0413-0	GASKET, GEAR CASE	JOINT	DICHTUNGGETRIEBEGEH.	1	-		
040	---	BLANK	BLANC	LEERE SPALTE	-	-		
050	15877-0414-0	SEAL, OIL	BAGUE JOINT	OELDICHTUNGSRING	1	-		
060	15852-0436-0	GASKET, BEARING CASE	JOINT CART. DE RLMT	DICHTUNG, LAGER	1	-		
070	1G460-0446-0	SEAL, OIL	BAGUE JOINT	OELDICHTUNGSRING	1	-		
080	15841-0482-3	GASKET, CASE COVER	JOINT DE CARTER FOU	DICHTUNG GEHAEUSEDEC	1	-		
090	---	BLANK	BLANC	LEERE SPALTE	-	-		
100	04814-16220	O RING	JOINT TORIQUE	O RING	1	-		
110	16851-3515-2	GASKET, OIL PUMP NA	JOINT POMPE A HUILE	DICHTUNG, OELPUMPE	1	-		
120	15601-9665-0	GASKET	JOINT	DICHTUNGSPLATTE	1	-		
130	04814-00160	O RING	JOINT TORIQUE	O RING	1	-		
140	04814-10070	O RING	JOINT TORIQUE	O RING	1	-		
150	15601-9665-0	GASKET	JOINT	DICHTUNGSPLATTE	2	-		
160	16265-9667-0	GASKET	JOINT	DICHTUNGSPLATTE	1	-		
170	04814-10160	O RING	JOINT TORIQUE	O RING	1	-		
180	16264-5214-0	GASKET, FUEL PUMP	JOINT DE POMP. CARB.	DICHTUNG, PUMPE	1	-		
190	15841-5721-2	GASKET, CONTROL PLATE	JOINT, PLAQUE CONTR.	DICHTUNG	1	-		

↔ Interchangeable; ≠ not interchangeable; ← new for old; → old for new

**NUMERICAL INDEX  
INDEX NUMERIQUE  
NUMERISCHEN INDEX**

PART No. REFERENCE BESELL-Nr.	PAGE PAGE SEITE	REF. No. POS. No. BILD-Nr.	PART No. REFERENCE BESELL-Nr.	PAGE PAGE SEITE	REF. No. POS. No. BILD-Nr.	PART No. REFERENCE BESELL-Nr.	PAGE PAGE SEITE	REF. No. POS. No. BILD-Nr.	PART No. REFERENCE BESELL-Nr.	PAGE PAGE SEITE	REF. No. POS. No. BILD-Nr.
E9151-3314-0	5	120	04814-50300	5	130	15261-2396-0	11	170	15841-5545-2	14	060
HH150-3243-0	6	010		38	080	15261-2397-3	12	180	15841-5569-0	14	070
T0070-3141-0	36	020	05012-00508	1	100	15261-2398-3	12	180	15841-5606-0	18	050
01023-50610	33	110	05012-00814	1	110	15261-4201-0	17	020	15841-5611-2	19	030
01023-50612	10	090	05411-00314	19	100	15261-5547-0	14	090	15841-5613-0	18	060
	14	140	05411-00318	18	080	15261-6641-0	18	090	15841-5615-0	18	070
01023-50614	2	020	05411-00420	33	140	15261-9202-0	15	030	15841-5623-0	18	110
	10	150	05712-00408	8	050	15261-9601-0	1	060	15841-5628-0	4	030
01023-50616	23	030	05712-00515	11	130		3	060	15841-5648-0	18	010
	24	090		14	050	15261-9616-0	1	090	15841-5711-2	19	020
01023-50616	29	060	05712-00518	10	070	15263-1237-0	35	070	15841-5721-2	19	170
01023-50618	4	100	06311-85025	1	040		38	130		39	190
	19	180	07715-00401	10	050	15321-9626-0	3	040	15841-7292-3	29	040
01023-50620	9	070	07715-00801	14	080	15401-6339-0	27	120		38	110
01023-50622	9	080	07715-03207	11	100	15451-9627-0	1	050	15841-7296-0	31	050
	30	080	07715-03211	4	080	15481-7305-0	30	040	15841-7302-0	1	160
01023-50625	34	030	07715-03217	14	100	15511-6376-0	27	140	15841-7425-0	24	100
01023-50635	18	120	08153-06203	14	030	15511-9666-0	27	200	15841-9101-0	4	120
01023-50638	30	090	09318-88125	5	020	15521-9602-0	1	070	15841-9105-0	8	030
01023-50680	4	130	09661-40040	20	270	15521-9603-0	1	080	15841-9150-0	17	080
01023-50690	4	140	09661-40085	20	200	15521-9603-0	4	020	15841-9151-0	31	030
01023-60650	4	110	09661-40130	20	230	15601-9665-0	15	090	15841-9203-0	21	020
	29	070	11173-6313-0	27	240		20	030	15841-9232-0	17	090
01123-50825	29	130	11197-6307-0	27	030		39	120	15841-9233-0	15	110
01123-50830	26	020	11197-6308-0	27	020		39	150	15841-9401-0	4	050
01123-60814	2	070	11197-6332-0	27	180	15694-6599-0	36	010	15841-9402-2	33	100
01123-60816	3	020	11197-6338-0	27	110	15707-3375-0	2	030	15841-9404-0	21	080
01153-50870	24	040	11420-1315-0	33	070	15841-0456-2	9	130	15841-9602-0	28	010
01513-50618	35	040		38	020	15841-0481-5	9	040	15841-9665-0	17	120
01513-50822	35	060	11460-6311-0	27	070	15841-0482-3	9	060	15841-9666-0	17	140
01754-50610	32	020	11460-6312-0	27	190	15841-0482-3	39	080	15841-9810-0	21	100
01754-50612	16	020	11460-6327-0	27	080	15841-1354-0	3	070	15841-9851-0	21	110
01754-50640	33	130	11460-6350-0	27	040	15841-1356-0	3	080	15841-9852-0	21	110
01759-50616	35	030	11460-6353-0	27	050	15841-1403-0	33	160	15841-9853-0	21	110
02056-50060	19	150	11460-9331-0	27	160	15841-1423-0	33	170	15841-9854-0	21	110
02156-50080	24	050	11521-6586-0	24	180	15841-1627-0	10	080	15841-9855-0	21	110
	26	030	11521-6592-0	24	155	15841-1632-0	14	130	15841-9856-0	21	110
	26	050	11521-6597-0	24	160	15841-2325-0	12	190	15841-9857-0	21	110
	35	080	13963-9201-0	27	230	15841-2411-0	11	120	15841-9858-0	21	110
02751-50060	31	040	14182-9203-0	25	270	15841-3566-0	8	040	15841-9859-0	21	110
02756-50060	35	050	14601-0345-0	3	090	15841-3693-0	4	070	15841-9860-0	21	110
02761-50040	20	170	14601-1324-0	33	030	15841-3901-0	28	020	15841-9861-0	21	110
02783-50100	8	060	14601-1333-0	33	040	15841-5132-0	17	110	15841-9862-0	21	110
03024-50510	5	070	14601-1336-0	33	050	15841-5135-0	17	130	15841-9863-0	21	110
03024-50520	20	140	14601-1424-0	33	180	15841-5136-0	20	020	15841-9864-0	21	110
04013-60080	24	060	14911-4275-0	17	030	15841-5316-0	21	060	15841-9865-0	21	110
04512-60050	18	100	14971-4275-0	20	210	15841-5317-0	21	040	15841-9866-0	21	110
04512-60060	17	100		20	240	15841-5323-0	21	030	15841-9867-0	21	110
04512-60080	24	070		20	280		21	110	15841-9868-0	21	110
	26	060	15021-3366-0	15	050	15841-5335-0	21	050	15841-9869-0	22	110
04512-60080	35	090	15108-5728-0	19	130	15841-5362-2	20	070	15841-9870-0	22	110
04612-00170	14	120	15221-0175-0	3	010		22	120	15841-9871-0	22	110
04814-00160	2	060	15221-3365-0	1	120		38	090	15841-9872-0	22	110
	39	130	15231-3396-0	1	130	15841-5385-0	20	120	15841-9873-0	22	110
04814-10070	19	110	15241-3229-0	4	040	15841-5386-0	20	130	15841-9874-0	22	110
	39	140	15261-0337-0	3	050	15841-5409-2	15	010	15841-9875-0	22	110
04814-10160	19	050	15261-2133-0	11	040	15841-5410-0	15	020	15841-9876-0	22	110
	39	170	15261-2353-0	11	170	15841-5412-3	15	070	15841-9877-0	22	110
04814-16220	12	210	15261-2354-3	12	180	15841-5422-0	15	040	15841-9878-0	22	110
	39	100	15261-2395-0	11	170	15841-5427-0	15	060	15841-9879-0	22	110

**NUMERICAL INDEX  
INDEX NUMERIQUE  
NUMERISCHEN INDEX**

PART No. REFERENCE BESELL-Nr.	PAGE PAGE SEITE	REF. No. POS. No. BILD-Nr.	PART No. REFERENCE BESELL-Nr.	PAGE PAGE SEITE	REF. No. POS. No. BILD-Nr.	PART No. REFERENCE BESELL-Nr.	PAGE PAGE SEITE	REF. No. POS. No. BILD-Nr.	PART No. REFERENCE BESELL-Nr.	PAGE PAGE SEITE	REF. No. POS. No. BILD-Nr.
15841-9880-0	22	110	16006-5212-2	17	060	16851-9627-0	1	030	1G460-2383-0	9	105
15841-9881-0	22	110	16030-9601-0	17	150	16861-1602-4	14	010		9	125
15841-9882-0	22	110	16221-7327-0	29	120	16864-1651-0	10	060		11	160
15841-9883-0	22	110		38	120	16866-5700-9	19	010	1G460-2391-0	11	140
15841-9884-0	22	110	16222-8304-0	29	030	16866-5730-2	19	160	1G460-2392-0	11	140
15841-9885-0	22	110	16241-7336-0	29	090	16866-9201-0	19	070	1G460-2393-0	11	150
15841-9886-0	22	110	16241-7337-0	5	040	16871-1443-0	33	090	1G460-2394-0	11	160
15841-9887-0	22	110		29	020	16871-2131-0	11	030	1G460-2395-0	11	150
15841-9888-0	22	110	16264-5214-0	23	020	16871-7343-0	30	070	1G460-2396-0	11	160
15841-9889-0	22	110		39	180		39	020	1G460-5371-2	20	090
15841-9890-0	22	110	16265-9667-0	2	040	16871-9101-0	13	050	1G460-5372-3	20	100
15841-9891-0	22	110		39	160	16871-9103-0	24	030	1G511-8981-5	37	030
15841-9892-0	22	110	16285-6302-0	27	130	16871-9105-0	19	190	1G513-3655-0	7	030
15852-0436-0	9	030	16285-6357-0	27	210	16871-9106-0	17	070	1G639-5715-0	19	060
	39	060	16285-9201-0	27	220	16871-9730-0	14	110	1G687-1311-0	33	010
15852-2516-0	13	030	16475-5328-0	21	070	16878-5774-2	19	080	1G687-1312-0	33	020
15852-5423-0	18	040	16611-6303-0	27	090	16878-5792-0	19	120	1G689-8916-0	37	010
15852-7334-0	30	060	16611-6304-0	27	060	17331-5919-0	1	140	1G700-5216-0	17	060
15852-7352-0	30	020	16631-6584-0	24	141	17341-6320-0	27	100	1G700-5220-0	17	050
15852-7355-0	30	030	16645-6583-0	24	200	17456-3642-0	7	020	1G801-0512-0	5	050
15861-2297-0	11	080	16652-6431-0	25	180	17548-6442-0	24	020	1G823-9935-4	38	010
15861-2298-0	11	080	16652-6460-0	25	280	19077-5365-0	20	080	1G826-2111-2	11	010
15861-9665-0	17	160	16652-6477-0	25	070		22	130	1G826-2177-0	12	220
15875-1617-3	14	020	16652-6478-0	25	130		38	100	1G826-2178-0	12	220
15875-2401-3	10	100	16662-6583-0	24	170	19202-9101-0	19	140	1G826-2190-2	11	010
15875-2425-0	10	140	16678-6401-2	24	010	19212-6310-0	27	150	1G911-0520-3	5	060
15875-2428-2	10	110		25	010	19212-9713-0	27	170	1G911-9102-2	5	110
15875-2432-0	10	130	16678-6406-0	25	140	19215-6375-0	24	150	1G952-0101-9	1	010
15875-2437-0	10	120	16678-6423-0	25	150	19237-6591-0	24	142	1G960-0551-2	5	010
15875-9934-0	10	160	16678-6583-0	24	140		24	190	1G960-0555-0	34	015
15877-0414-0	4	160	16805-7286-0	31	010	19237-6591-0	24	220	1G960-1177-0	34	010
	39	050	16805-7287-0	31	020	19269-6301-0	26	010	1G960-1450-5	5	030
15881-2331-0	12	200	16809-4202-0	20	260		27	010	1G961-5203-0	23	010
15881-6409-0	25	190	16809-4203-0	20	190	19280-5724-0	19	040	1G962-0150-2	2	010
15881-6411-0	25	020	16809-4250-0	20	220	19434-7301-4	29	100	1G962-0160-0	2	005
15881-6415-0	25	040	16809-9568-0	17	010	19666-0462-0	13	040	1G962-0304-5	3	030
15881-6426-0	25	120	16829-3641-0	7	010	19837-6437-4	24	035	1G962-0331-3	3	100
15881-6433-0	25	200	16851-1328-0	33	060	19872-6584-0	24	210		38	030
15881-6471-0	25	100	16851-1511-0	10	020	1A021-9602-0	29	050	1G962-0413-0	4	090
15881-6480-0	25	060	16851-1555-2	10	010	1E051-7270-2	29	010		39	030
15881-6481-0	25	080	16851-1621-2	1	150	1E051-7303-0	30	010	1G962-0705-0	9	110
15881-6485-0	25	160	16851-2198-2	11	060	1E051-7326-0	29	110	1G962-1182-0	34	020
15881-6490-0	25	170	16851-2201-5	11	050	1G021-9665-0	15	100		38	040
15881-9103-0	24	120	16851-2214-0	11	070	1G031-5421-0	15	080	1G962-1231-0	35	010
15881-9104-0	25	240	16851-2232-0	11	080	1G065-4236-0	20	250	1G962-1235-0	35	020
15881-9105-0	25	260	16851-2233-0	11	080	1G460-0402-4	4	010		38	050
15881-9201-0	25	030	16851-3211-0	2	050	1G460-0446-0	9	050	1G962-1426-2	33	080
15881-9202-0	25	250	16851-3501-2	8	010		39	070	1G962-1452-2	5	100
15881-9301-0	25	110	16851-3515-2	8	020	1G460-0454-0	9	020		38	070
15881-9302-0	25	210		39	110		9	100	1G962-1601-5	10	030
15881-9303-0	25	220	16851-3695-0	4	060	1G460-0454-0	9	120	1G962-2301-2	11	090
15881-9304-0	25	230	16851-5115-0	14	040	1G460-0704-0	9	090	1G962-2375-2	12	230
15881-9701-0	24	130	16851-5361-0	21	090	1G460-0709-0	9	010	1G962-2376-2	12	230
16001-5300-0	20	060	16851-5641-0	18	020	1G460-1431-2	33	150	1G962-2377-2	12	230
	21	010	16851-5772-4	19	090	1G460-1435-0	33	120	1G962-2501-0	13	010
16001-5390-0	20	050	16851-6001-4	16	010	1G460-2105-0	11	020	1G962-4250-0	20	010
	21	005	16851-6382-2	13	020	1G460-2109-0	11	020	1G962-5373-2	20	110
16006-5101-0	17	040	16851-6551-2	20	150	1G460-2347-0	11	140	1G962-5605-2	18	030
16006-5209-2	17	050	16851-7335-0	29	080	1G460-2382-0	9	025	1G962-6556-0	20	160
16006-5211-2	17	050	16851-9626-0	1	020		11	150	1G962-7428-0	24	110



**NUMERICAL INDEX  
INDEX NUMERIQUE  
NUMERISCHEN INDEX**

PART No. REFERENCE BESELL-Nr.	PAGE PAGE SEITE	REF. No. POS. No. BILD-Nr.	PART No. REFERENCE BESELL-Nr.	PAGE PAGE SEITE	REF. No. POS. No. BILD-Nr.	PART No. REFERENCE BESELL-Nr.	PAGE PAGE SEITE	REF. No. POS. No. BILD-Nr.	PART No. REFERENCE BESELL-Nr.	PAGE PAGE SEITE	REF. No. POS. No. BILD-Nr.
1G962-9936-5.....39...010 1K123-7411-0.....32...010 66436-6402-0.....25...090 66436-6404-0.....25...050											

# KUBOTA

## **THE BASIC NECESSITIES GIANT**

"Technology for the Needs of Tomorrow" is the ambition of everyone at Kubota. Through research and the development of new products for agriculture, industry, construction, and many other areas of modern life, we at Kubota hope to realize this goal.

## **GEANT DES NECESSITES FONDAMENTALES**

"La Technologie pour les Besoins de Demain" est l'ambition de chacun CHEZ KUBOTA. A travers la recherche et le développement de nouveaux produits pour l'Agriculture, l'Industrie, la Construction et plusieurs autres domaines de la vie moderne, Nous KUBOTA, espérons atteindre ce but.

## **GIGANT BER FUNDAMENTALEN NOT WENDIGKEITEN**

"Technologie für die Welt von Morgen"  
Wir bei KUBOTA arbeiten ständig an diesem Ziel durch Forschung und Entwicklung neuer Produkte für den Agrarsektor, die Industrie, die Bauwirtschaft und viele andere Bereiche unserer modernen Zeit. Die Ziellinie verschiebt sich ständig, aber wir kommen ihr näher.

PRINTED in JAPAN  
IMPRIME Au JAPON  
DRÜCK JAPAN